

R SERIES ROTARY SWITCH



1. RATING : 30 V DC , 300 mA .
2. CONTACT RESISTANCE : 20 mΩ MAX .
3. INSULATION RESISTANCE : DC 500 V , 500 MΩ MIN .
4. OPERATING LIFE : 10,000 CYCLES .

HOW TO ORDER

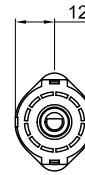
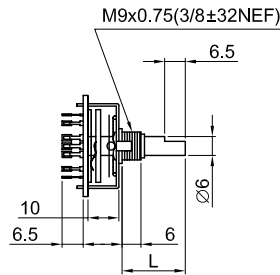
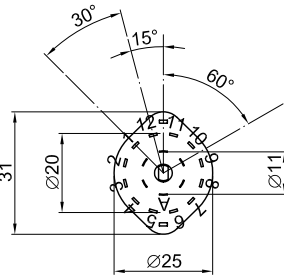
R	-						
SERIES		POLE	POSITION	TERMINAL	LENGTH OF SHAFT	STYLE OF SHAFT	KNOB
ROTARY SWITCH		1 2 3 4 6	1 12	W P C		KQ R S F	CONSULTATION KNOB SERIES P.73-76

TERMINAL

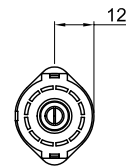
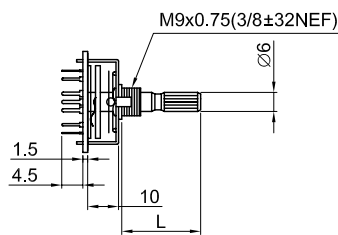
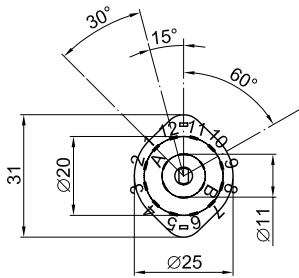
POLE	POSITION	POLE	POSITION	POLE	POSITION	POLE	POSITION
1	2	1	9	2	5	4	3
1	3	1	10	2	6	6	2
1	4	1	11	3	2		
1	5	1	12	3	3		
1	6	2	2	3	4		
1	7	2	3	4	2		
1	8	2	4	4	3		

TERMINAL

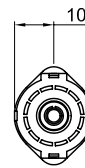
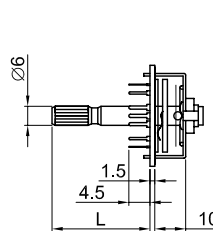
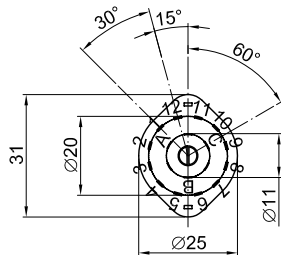
W. (WIRE TYPE)



P. (P.C.B TYPE)



C. TYPE



LENGTH

CODE	1	2	3	4	5
L	15	20	25	30	OTHER

STYLE

KQ	R	S	F
18 TEETH FRAME TYPE	ROUND TYPE	SHALLOW FRAME TYPE	PLAN SURFACE TYPE