

Nidec Servo Company & Business Overview

Nidec Servo Corporation

Nidec Servo Corporation

- ▶ HQ address 3-93 Aioi-cho, Kiryu-shi, Gunma
- ▶ President Hirokazu Kamiyama
- ▶ Established April 19th, 1949
- ▶ Capital \$25.5M
- ▶ Employees 2,600 Consolidated (as of E/Sep 2019)
- ▶ Business R&D, Production & Sales of Precision motors and Fans.

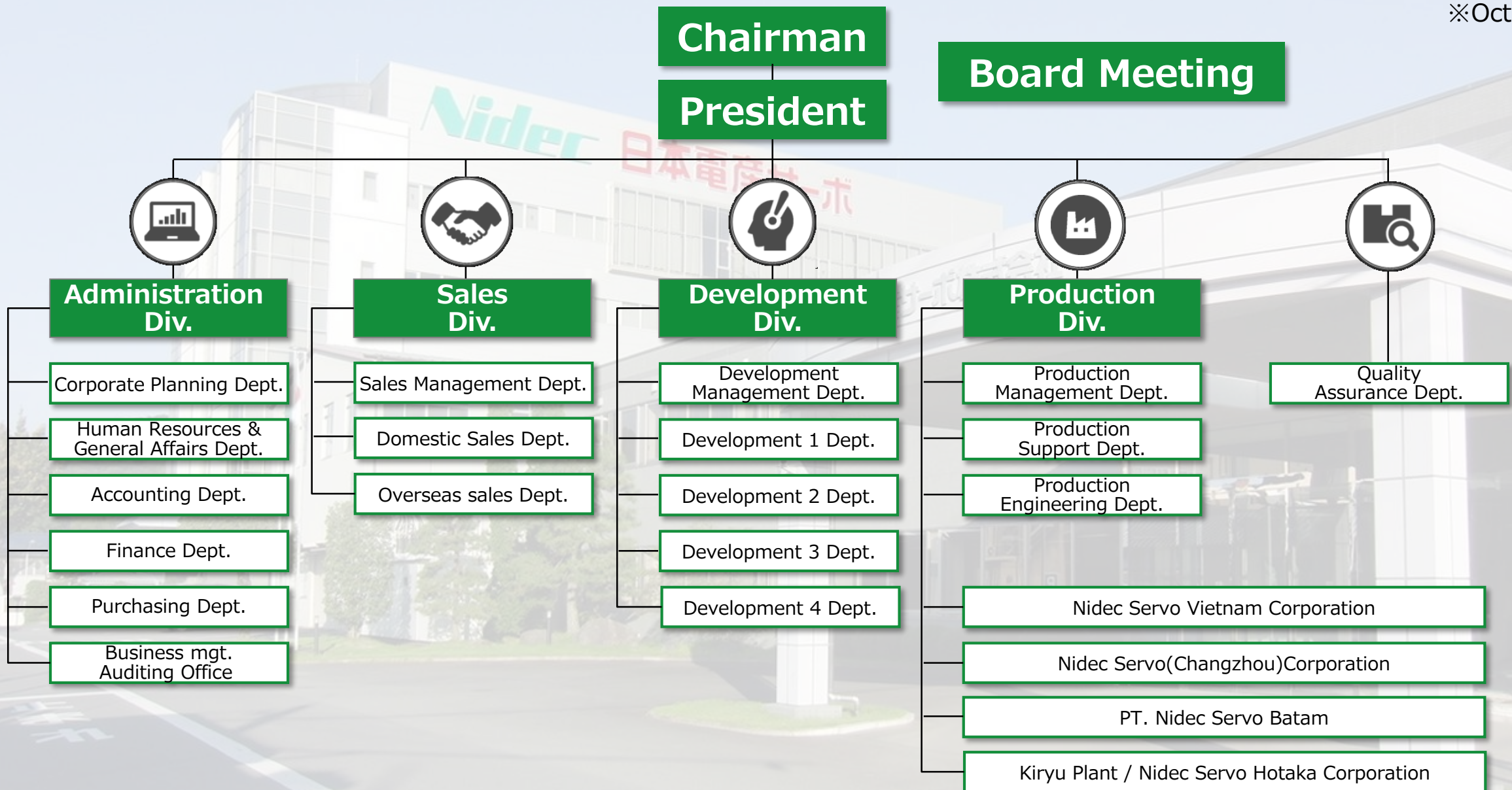


History

- 
- | | |
|------|--|
| 1949 | Kiryu Eikosha Co., Ltd. founded |
| 1951 | Started manufacturing and sales for servo motors as the first company in Japan |
| 1960 | Changed company name to Japan Servo., Ltd
Relocated Headquarters to Chiyoda-ku, Tokyo |
| 1986 | Established Japan Servo Hotaka Co., Ltd |
| 1995 | Established Changzhou Servo Motors Co., Ltd. in China |
| 2007 | Merged with the Nidec Corporation Group
Established Kiryu Technical Center |
| 2008 | Changed company name to Nidec Servo Corporation
Relocated the headquarter to Kiryu-shi, Gunma |
| 2009 | Established Nidec Servo Vietnam Corporation |
| 2010 | Wholly owned by Nidec Corporation |
| 2018 | Certified IATF 16949 |

Organization

※Oct. 2019



Major product group & Application

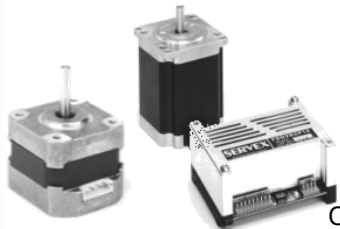


Fans & Blowers

DC Fan, AC Fan, DC Blower, Ass'y

For cooling, exhaust, suction,
and air circulation applications

Cell Phone Base Station, Router, Server, Power Unit, OA Equipment,
Car, Home Appliance, House/Building Equipment, Textile Machinery



Stepping Motors

Motor Circuit Integ. Motor Motor & Circuit Board

For the cases that high-speed response
and position accuracy are required

OA Equipment, Semi Conductor Manufacturing, Monetary Equipment
Surveillance Camera, Lighting, Construction Machinery



Brushless DC Motors

AC/DC Motor Motor & Circuit Board

For applications that require high efficiency
and long life

Commercial Refrigerator, OA Equipment, Monetary Equipment,
Bath Ventilation, Industrial Drone, Medical Equipment,
Measuring Equipment, Working Machine, Home Appliance



DC Motors

Motor & Gear Head Ass'y

For applications that require high efficiency /
controllability

OA Equipment, Amusement Equipment, Working Machine,
Banking Machine, Agricultural Machinery, Medicine Dispensing
Machine, Car, Vending Machine, Home Appliance, Medical
Equipment, Test Equipment



System Equipment

Ice Maker, Medical Equipment, Medical Blood Pump

For special applications / custom products

Ice Maker for Refrigerator, Medical Equipment, Test Equipment,
Agricultural Machinery, Home/Building Equipment,
Industrial Machinery

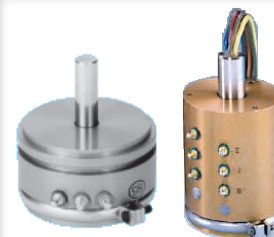


AC Motors & GH

Induction & Gear Head Shaded-pool Motors, Synchronous Motor

For applications that a constant speed rotation
/ stop system is required

Working Machine, Home/Building Equipment, Banking Machine,
Agricultural Machinery, Medicine Dispensing Equipment, Home
Appliance, Measuring Equipment, Food Processing Machinery



Sensors

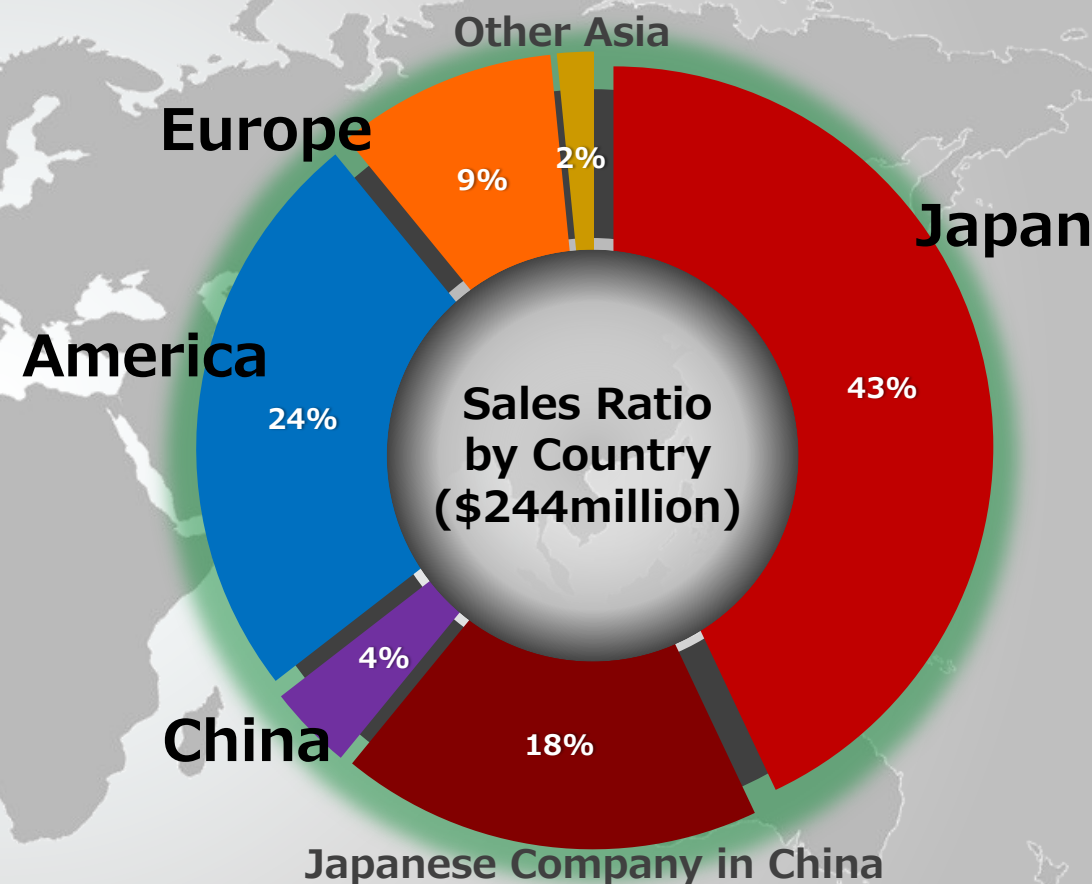
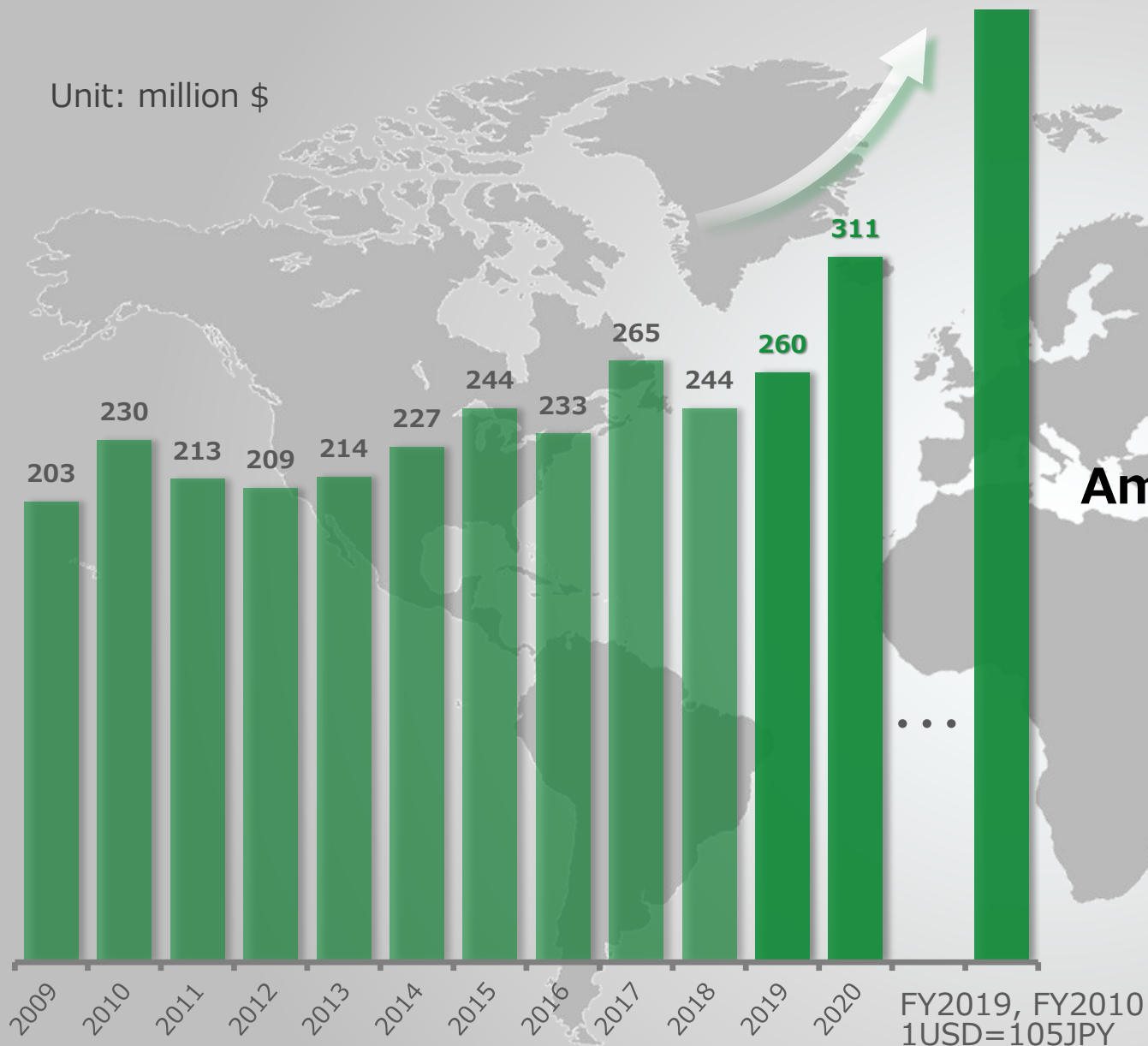
Slip Ring, Potentiometer

For motors that require special applications / controls

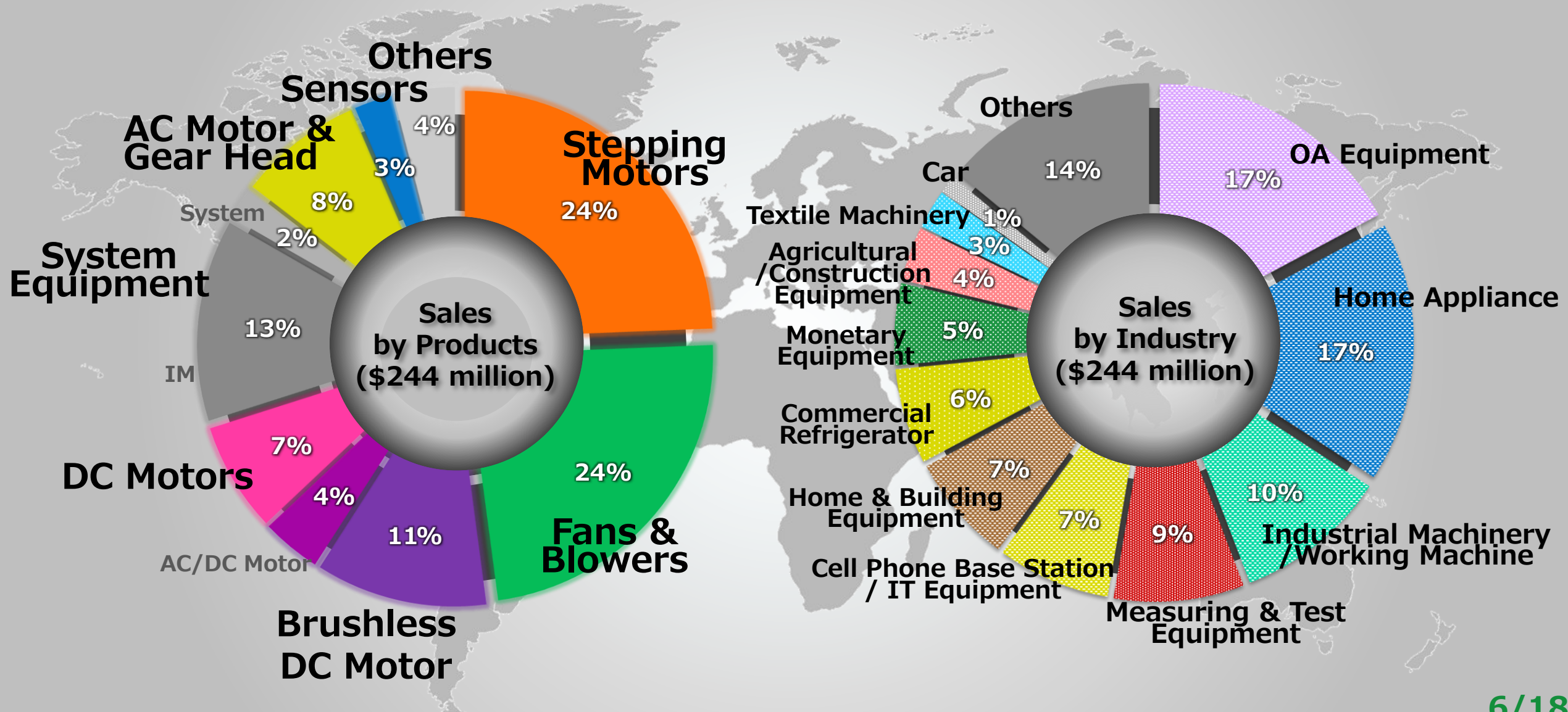
Surveillance Camera, Semi Conductor Manufacturing Machine,
Printing Machine, Construction Machinery, Lighting Equipment, OA
Equipment, Test Equipment

Sales trends · Sales Ratio by Country (FY18 results)

Unit: million \$



Sales by Products & Industry (FY18 results)



Main Customer

FAN / Blower

NOKIA

(Cell Phone Base)



(Server/Router)

ciena

Koito

(Car)



(Home Appliance)

ABB

(Power Unit)

Hybrid Stepping Motor

Canon

(OA)



(Electronic Assembly Equipment)



(Surveillance Camera)



(Monetary Equipment)

TORAY

(Medical Equipment)

SAURER.
Schlafhorst

(Textile Machinery)

KOBELCO

(Construction machinery)

Brushless DC Motor

HUSSMANN

(Home elevator)

TRUE

(Commercial refrigerator)



HOSHIZAKI

Panasonic

(Home elevator)



SUPERMUM

(Blender)

KYOWA

(Conveyer system)



HASCO

(Car)

DC Motor

FE 富士電機

(Monetary Equipment)

GAMBRO

(Medical Equipment)

MAX

(OA)

GRAPHTEC

(Plotter)

LIXIL

(Home/Building Equipment)

Anritsu
envision : ensure

(Test Equipment)

DAIFUKU

Always an Edge Ahead
(Material handling)

System Equipment



(Ice Maker)



Electrolux

NIKKISO

(Medical Equipment)

TORAY

KITZ

(Home/Building Equipment)

sysmex

(Specimen examination device)

Application Introduction①

◆ Convenience store ◆

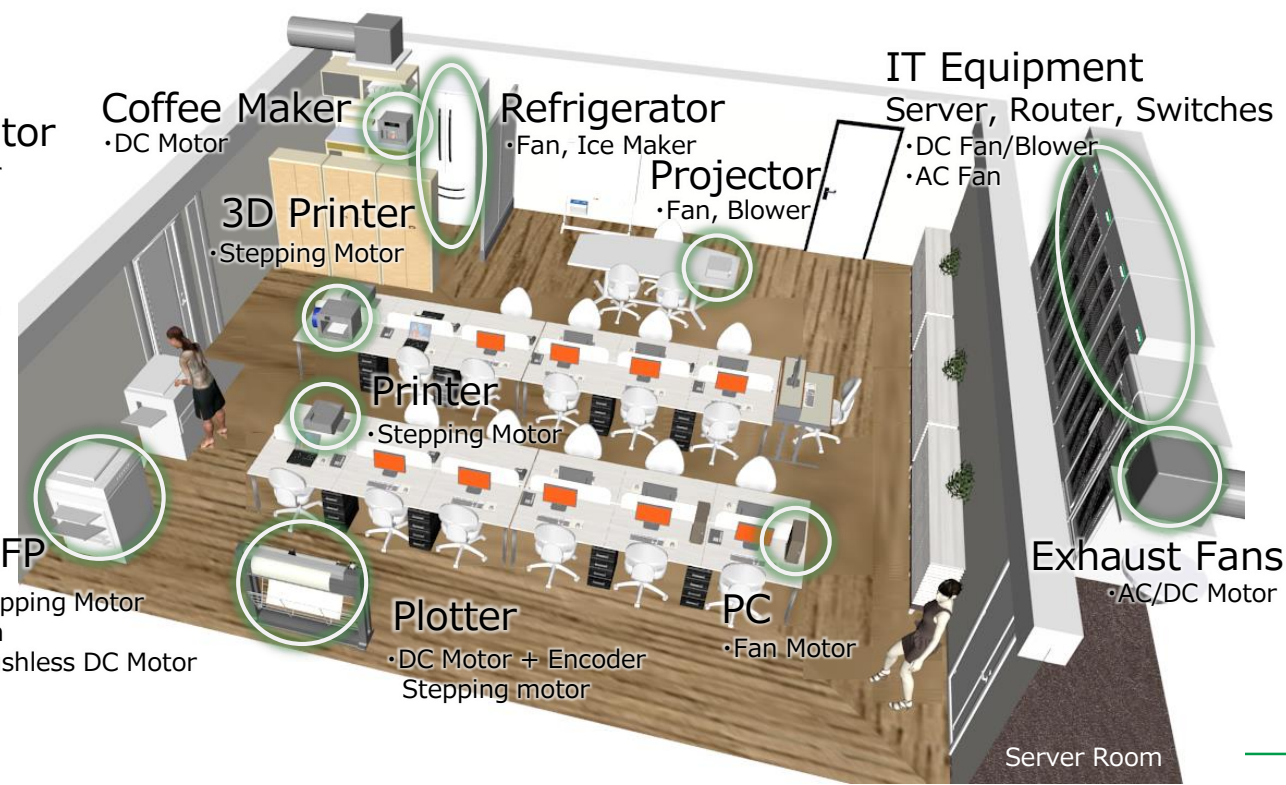
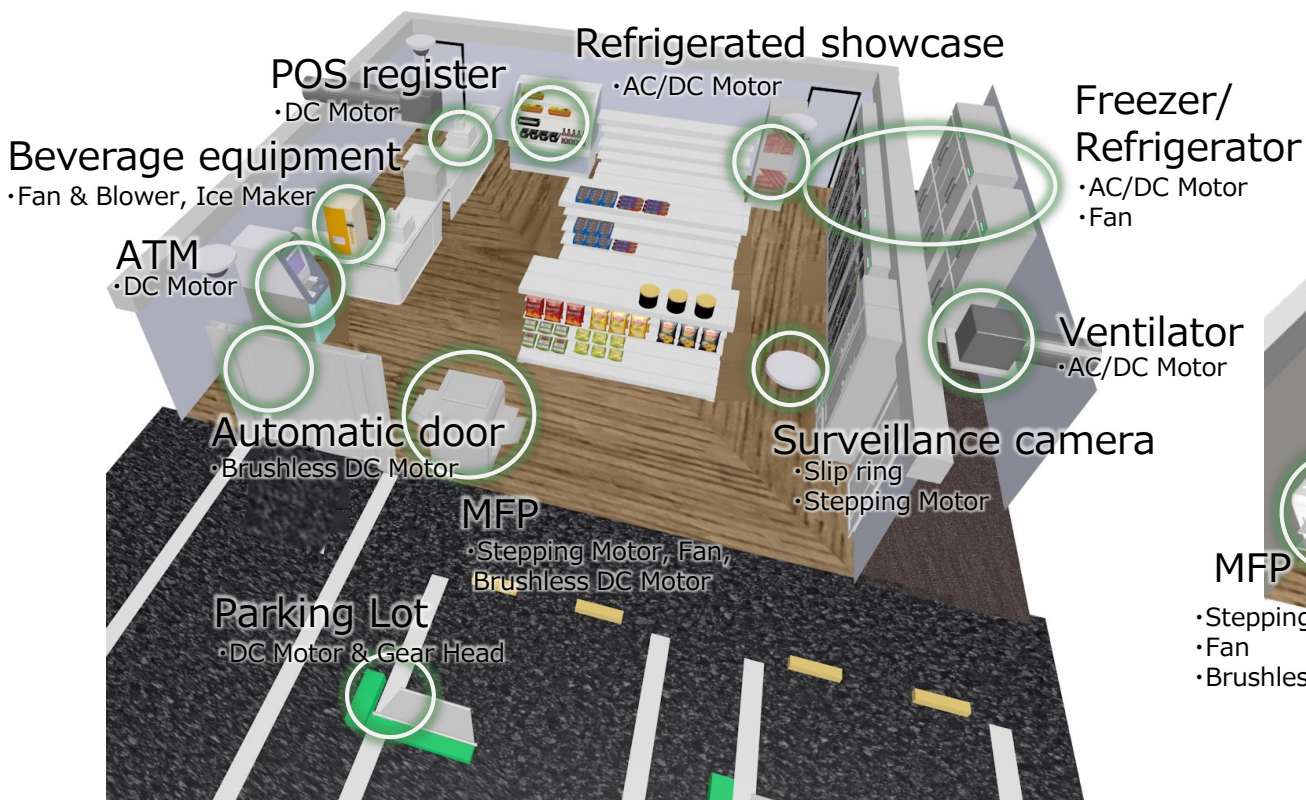


Brushless DC DC Motor Stepping Motor AC/DC Motor DC Motor & Gear Head

◆ Office ◆

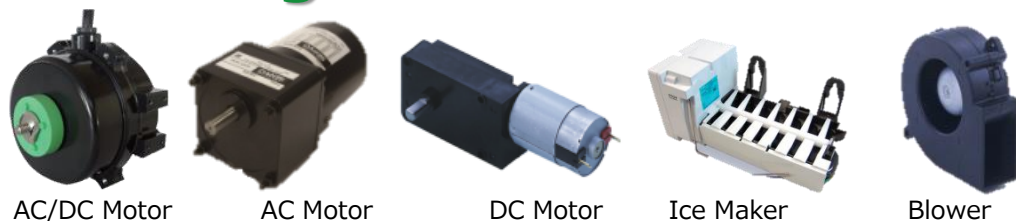


DC Fans DC Motor + Encoder Blower Stepping Motor

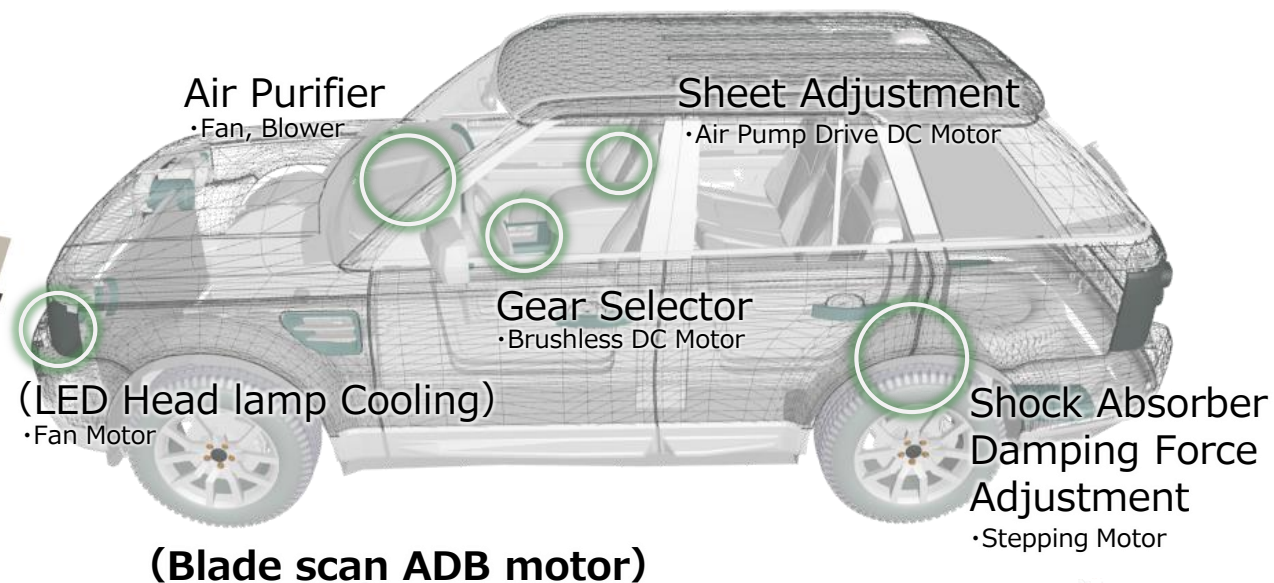
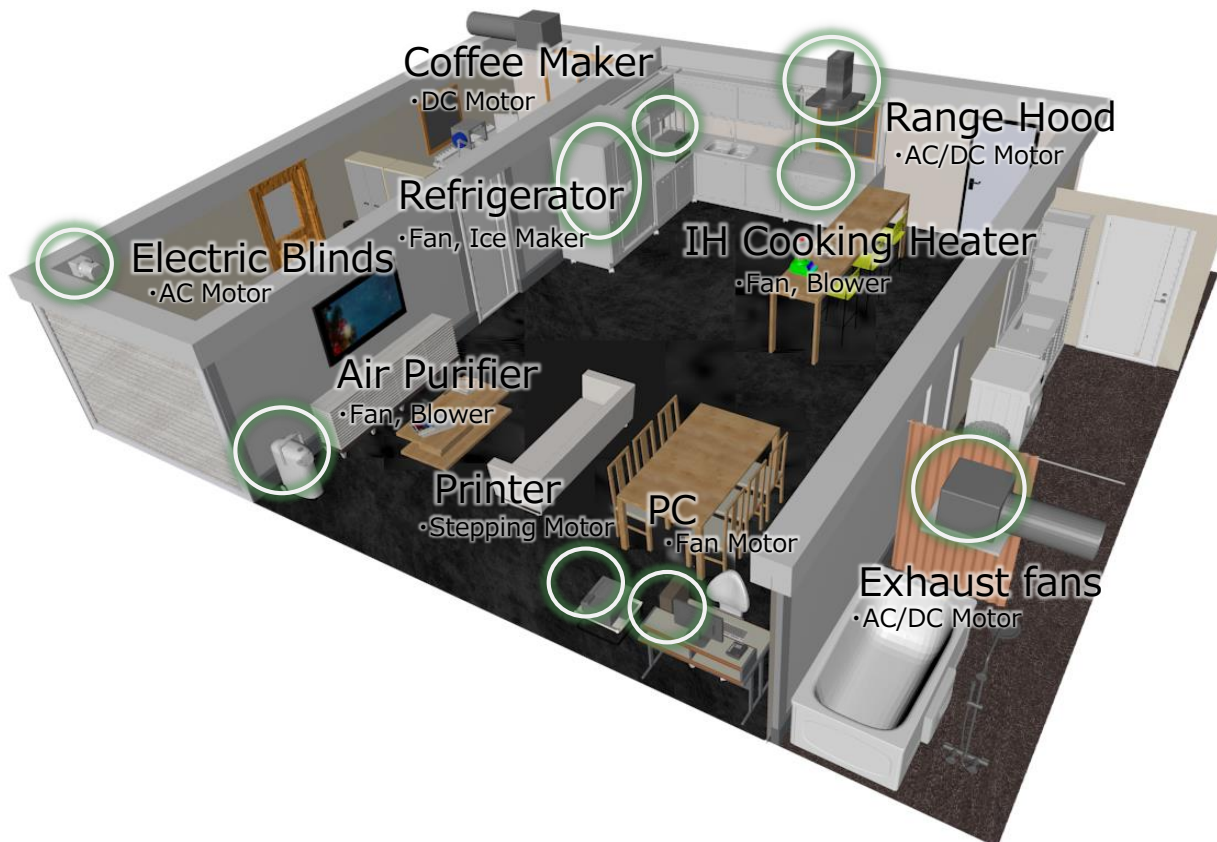
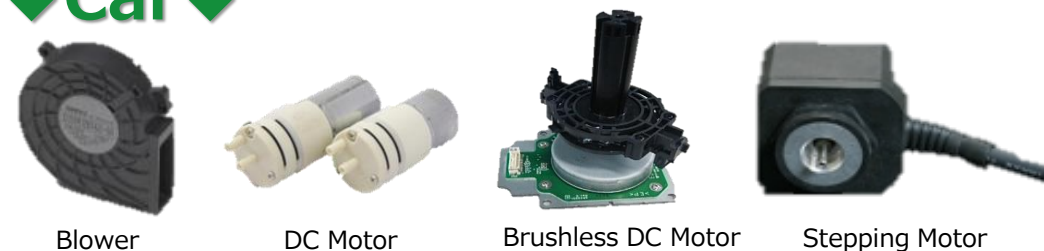


Application Introduction②

◆ Housing ◆



◆ Car ◆



(Blade scan ADB motor)



Application Introduction③

◆ Hospital ◆



Stepping Motor



Blood Pump



AC Fan



DC Fan



DC Motor

◆ Factory ◆



Brushless DC Motor



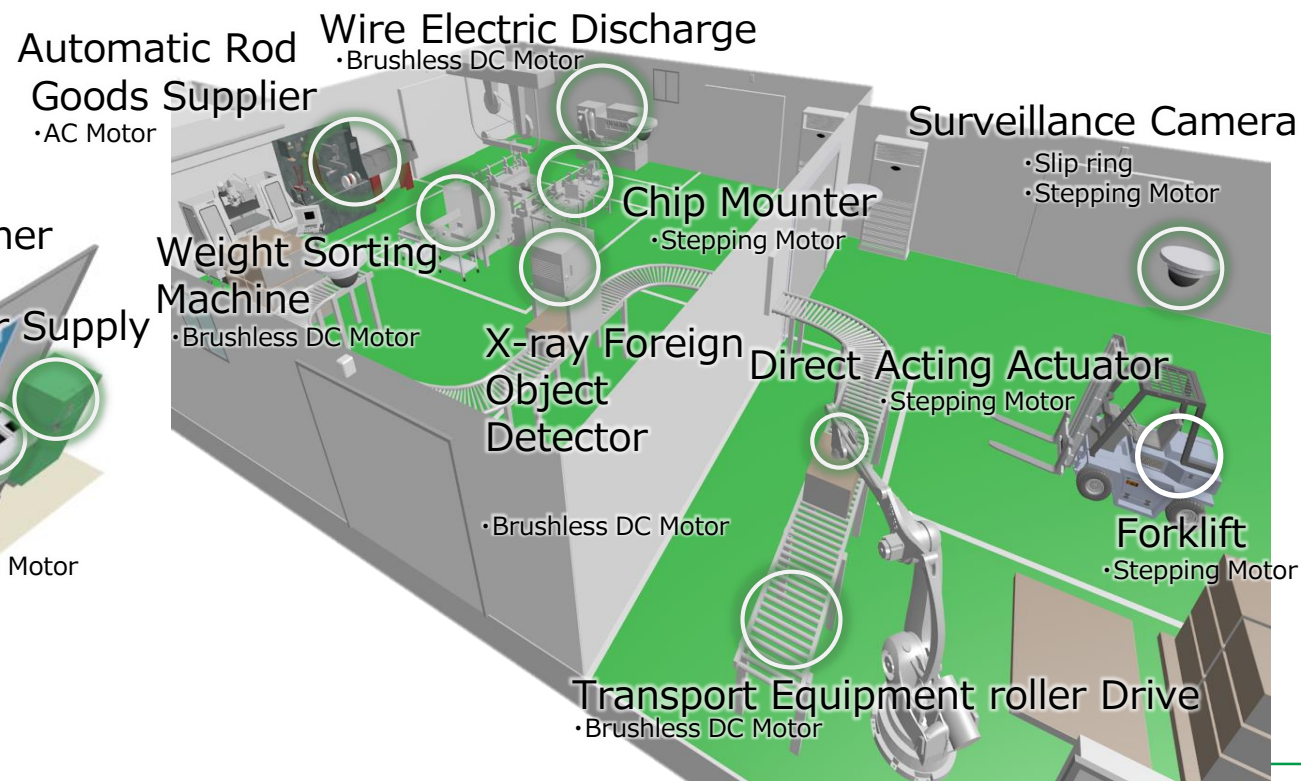
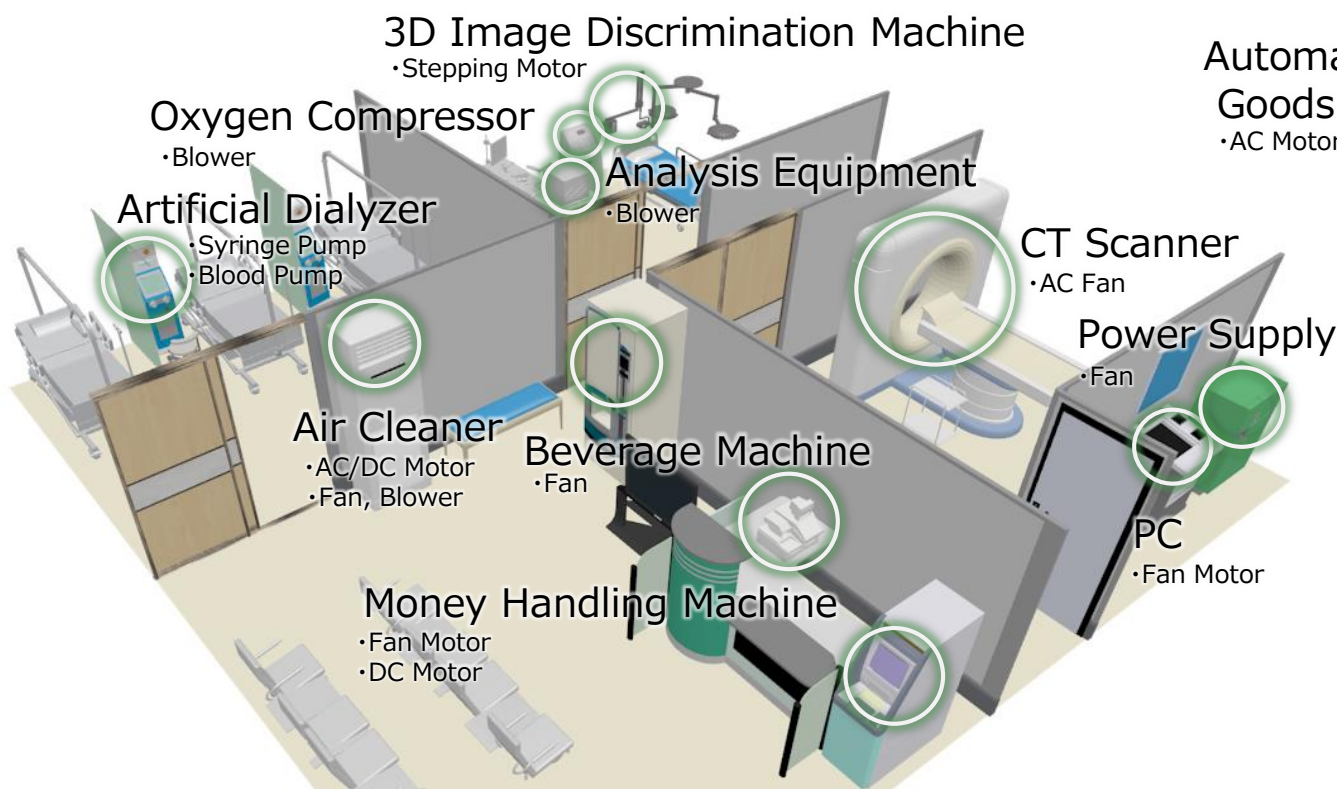
AC Motor



Stepping Motor



Slip Ring



Global Network



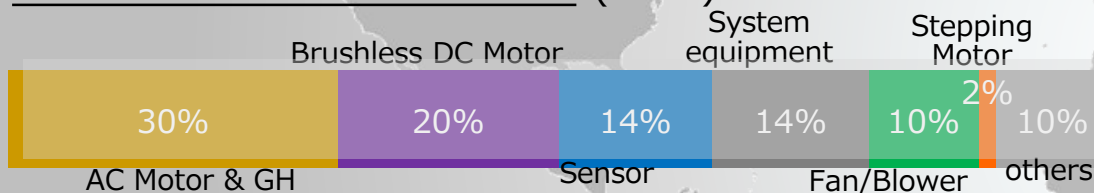
Japan Factory

Kiryu Plant

- Address : Kiryu-shi,
Gunma, Japan
- Established : April, 1949
- Employees : 184 (as of E/Mar 2018)
- Production Volume : 3.0 billion yen(FY18)



Production ratio results (FY18)



Production results (FY18 results) unit: Thousand Unit

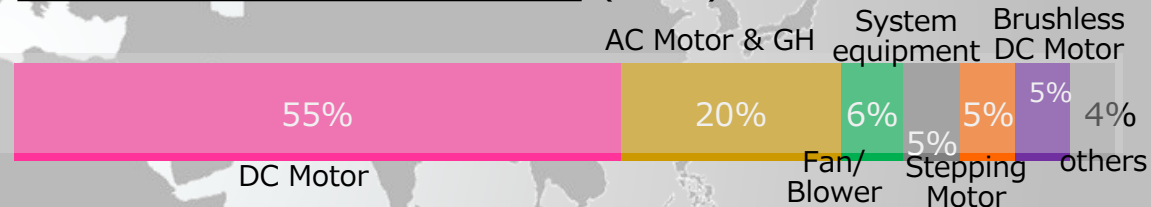
	(Quantity base)
AC Motor & GH	332
Brushless DC Motor	118
Sensor	73
System equipment	52
Fan/Blower	6
Stepping Motor	60

Nidec Servo Hotaka Corporation

- Address : Azumino-city,
Nagano, Japan
- Established : April, 1986
- Employees : 56 (as of E/Mar 2018)
- Production Volume : 2.0 billion yen(FY18)



Production ratio results (FY18)



Production results (FY18 results) unit: Thousand Unit

	(Quantity base)
DC Motor	1,049
AC Motor & GH	228
Fan/Blower	13
System equipment	26
Stepping Motor	68
Brushless DC Motor	33

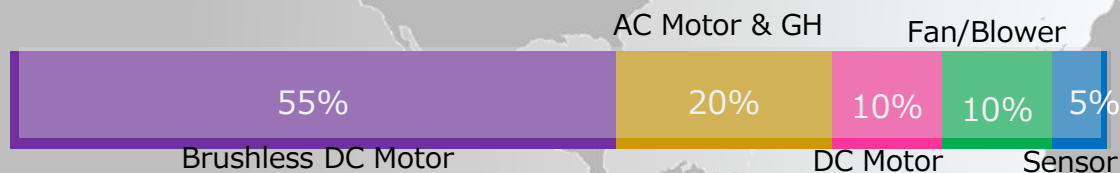
Overseas Factory

Nidec Servo(Changzhou)Corporation

- Address : Changzhou City, Jiangsu Province, P.R.China
- Established : January, 1995
- Employees : 585 (as of E/Mar 2018)
- Production Volume : 5.0 billion yen(FY18)



Production ratio results (FY18)



Production results (FY18 results) unit: Thousand Unit

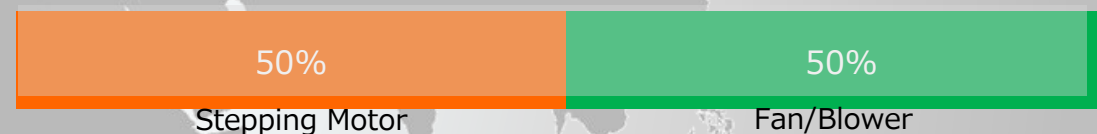
	(Quantity base)
Brushless DC Motor	1,809
AC Motor & GH	1,383
DC Motor	1,538
Fan/Blower	493
Sensor	143

Nidec Servo Vietnam Corporation

- Address : Ho Chi Minh City, Vietnam
- Established : January, 2009
- Employees : 1,328 (as of E/Mar 2018)
- Production Volume : 10.5 billion yen(FY18)



Production ratio results (FY18)



Production results (FY18 results) unit: Thousand Unit

	(Quantity base)
Stepping Motor	9,710
Fan/Blower	6,044

Certification

Nidec Servo has applied ISO9001 in 1994 as the first company of a small motor manufacturer in Japan.

⇒All manufacturing companies under Nidec Servo in the world have already applied ISO9001.

Nidec Servo has applied ISO14001 in 1998 as the first company of a motor manufacturing facility in Japan.

⇒We have developed environmental management system and activities in all of our global production facilities including our headquarters.

Nidec Servo has applied IATF16949 in 2018



CSR

Nidec strives to achieve sustainable business growth by harmonizing with stakeholders, society, and the environment, while being cognizant of the social responsibility of being the "world's No.1 comprehensive motor manufacturer."



What Shapes Our CSR

We will implement the following three actions according to the spirits of the mission statement and the three basic management creeds.

- ①social contribution through business activities.
- ②sincere business management.
- ③social contribution through non-business activities.

Nidec Group

Nidec Group Network



日本電産グループは308社が43か国に進出しております (2017年9月20日現在)。
進出しているエリアは上記マップを色付けしております。

The Nidec Group has grown to encompass 308 companies in 43 cc
September 20, 2017). Nidec has expanded its operations into all of
shown in green on the map above.

Nidec

— All for dreams