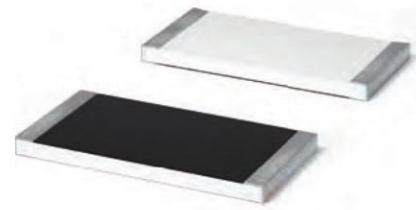


RC SERIES GENERAL THICK FILM CHIP RESISTORS



FEATURES

Small size and lightweight High reliability Metal glaze thick film resistive element and three layers of electrodes Compatible with placement machines Taping packaging available RoHS compliant.

»» APPLICATIONS

Typical applications include Portable Devices, Measurement instrument, Consumer Electronics, Computer / Motherboard , etc

»» ORDERING INFORMATION

RC	0805	1001	B	T
Series	Case size	Resistance Value	Tolerance	Packaging
RC	0201 0402 0603 0805 1206 1210 2010 2512	Three digits (E-24 series) Four digits(E-96 series) Decimal point should be expressed by "R".	B=0.1% D=0.5% F=1% J=5%	7" Tape & Reel

RC SERIES GENERAL THICK FILM CHIP RESISTORS

»» DIMENSIONS

Unit:mm	Case Size	L	W	H	L1	L2
	0201	0.60±0.03	0.30±0.03	0.23±0.03	0.10±0.05	0.15±0.05
	0402	1.00±0.10	0.50±0.10	0.35±0.10	0.20±0.20	0.20±0.20
	0603	1.60±0.10	0.80±0.15	0.45±0.10	0.30±0.20	0.30±0.20
	0805	2.00±0.15	1.20±0.15	0.50±0.10	0.40±0.20	0.40±0.20
	1206	3.10±0.15	1.60±0.15	0.55±0.10	0.50±0.25	0.50±0.25
	1210	3.10±0.15	2.60±0.15	0.55±0.10	0.50±0.25	0.50±0.25
	2010	5.00±0.20	2.50±0.20	0.60±0.10	0.60±0.25	0.60±0.25
	2512	6.30±0.20	3.20±0.20	0.60±0.15	0.60±0.25	0.90±0.25*

*大功率系列2512的L2为(1.80±0.25)

»» RATINGS

Type	Power Rating at 70°C	Max. RCWV	Max. Overload Voltage	Temperature Coefficient (TCR; ppm/°C)	Resistance Range(Ω)	Resistance Tolerance (%)
RC0201	1/20W	25V	50V	-200~+600	1Ω≤R≤3.92Ω	F, J
				-200~+350	4.02Ω≤R≤9.76Ω	F, J
				±200	0Ω, 10Ω≤R≤10MΩ	F, J
RC0402	1/16W	25V	50V	±100	100Ω≤R≤1MΩ	B, D
				±100	1Ω≤R≤10MΩ	F
				±200	0Ω, 1Ω≤R≤10MΩ	J
RC0603	1/10W	50V	100V	±50	20Ω≤R≤510KΩ	B, D
				±100	1Ω≤R≤10MΩ	F
				±200	0Ω, 1Ω≤R≤10MΩ	J
RC0805	1/8W	100V	200V	±50	20Ω≤R≤510KΩ	B, D
				±100	1Ω≤R≤10MΩ	F
				±200	0Ω, 1Ω≤R≤10MΩ	J
RC1206	1/4W	200V	400V	±50	20Ω≤R≤510KΩ	B, D
				±100	1Ω≤R≤10MΩ	F
				±200	0Ω, 1Ω≤R≤10MΩ	J
RC1210	1/3W	200V	400V	±100	1Ω≤R≤10MΩ	F
				±200	0Ω, 1Ω≤R≤10MΩ	J
				±100	1Ω≤R≤10MΩ	F
RC2010	1/2W	200V	400V	±100	1Ω≤R≤10MΩ	F
				±200	0Ω, 1Ω≤R≤10MΩ	J
				±100	1Ω≤R≤10MΩ	F
RC2512	1W	200V	400V	±100	1Ω≤R≤10MΩ	F
				±200	0Ω, 1Ω≤R≤10MΩ	J
				±100	1Ω≤R≤10MΩ	F

0Ω: 0201,0402,0603 size maximum resistance R max < 50mΩ and rated current I R ≤ 1A;
0805,1206,1210,2010,2512 size maximum resistance R max < 50mΩ and rated current I R ≤ 2A

RC SERIES GENERAL THICK FILM CHIP RESISTORS

» RESISTANCE & TOLERANCE

1% 0.1%,0.5%	1%,5%	1% 0.1%,0.5%	1%,5%	1% 0.1%,0.5%	1%,5%	1% 0.1%,0.5%	1%,5%	1% 0.1%,0.5%	1%,5%	1% 0.1%,0.5%	1%,5%
(01)100	10	(17)147	—	(33)215	—	(49)316	—	(65)464	—	(81)681	68
(02)102	—	(18)150	15	(34)221	22	(50)324	—	(66)475	—	(82)698	—
(03)105	—	(19)154	—	(35)226	—	(51)332	33	(67)487	—	(83)715	—
(04)107	—	(20)158	—	(36)232	—	(52)340	—	(68)499	—	(84)732	—
(05)110	11	(21)162	—	(37)237	—	(53)348	—	(69)511	51	(85)750	75
(06)113	—	(22)165	—	(38)243	—	(54)357	—	(70)523	—	(86)768	—
(07)115	—	(23)169	—	(39)249	—	(55)365	—	(71)536	—	(87)787	—
(08)118	—	(24)174	—	(40)255	—	(56)374	—	(72)549	—	(88)806	—
(09)121	12	(25)178	—	(41)261	—	(57)383	—	(73)562	56	(89)825	82
(10)124	—	(26)182	—	(42)267	—	(58)392	39	(74)576	—	(90)845	—
(11)127	—	(27)187	—	(43)274	—	(59)402	—	(75)590	—	(91)866	—
(12)130	13	(28)191	—	(44)280	—	(60)412	—	(76)604	—	(92)887	—
(13)133	—	(29)196	—	(45)287	—	(61)422	—	(77)619	62	(93)909	91
(14)137	—	(30)200	20	(46)294	—	(62)432	43	(78)634	—	(94)931	—
(15)140	—	(31)205	—	(47)301	30	(63)442	—	(79)649	—	(95)953	—
(16)143	—	(32)210	—	(48)309	—	(64)453	—	(80)665	—	(96)976	—
E96	E24	E96	E24	E96	E24	E96	E24	E96	E24	E96	E24

» RESISTANCE & TOLERANCE

Code	A	B	C	D	E	F	G	H	X	Y	Z
Multiplier	10 ⁰	10 ¹	10 ²	10 ³	10 ⁴	10 ⁵	10 ⁶	10 ⁷	10 ⁻¹	10 ⁻²	10 ⁻³



E-24 SERIES:
3 digit marking for ±5%
examples: 473 47×10³= 47KΩ
1R5=1.5Ω



E-96 SERIES
4 digit marking for E96
examples: 1542 154×10²= 15K4Ω
22R1 = 22.1Ω



3 digit marking for E96 - 0603
examples: 02C (Table Standard
resistance value)
102×10²= 10K2Ω

※ No Marking of 0402, 0201