



NIDEC SERVO CORPORATION

Nidec Servo Company & Business Overview

Nidec Servo Corporation

Nidec Servo Corporation

- ▶ HQ address 3-93 Aioi-cho, Kiryu-shi, Gunma
- ▶ President Hirokazu Kamiyama
- ▶ Established April 19th, 1949
- ▶ Capital \$25.5M
- ▶ Employees 2,600 Consolidated (as of E/Sep 2019)
- ▶ Business R&D, Production & Sales of Precision motors and Fans.

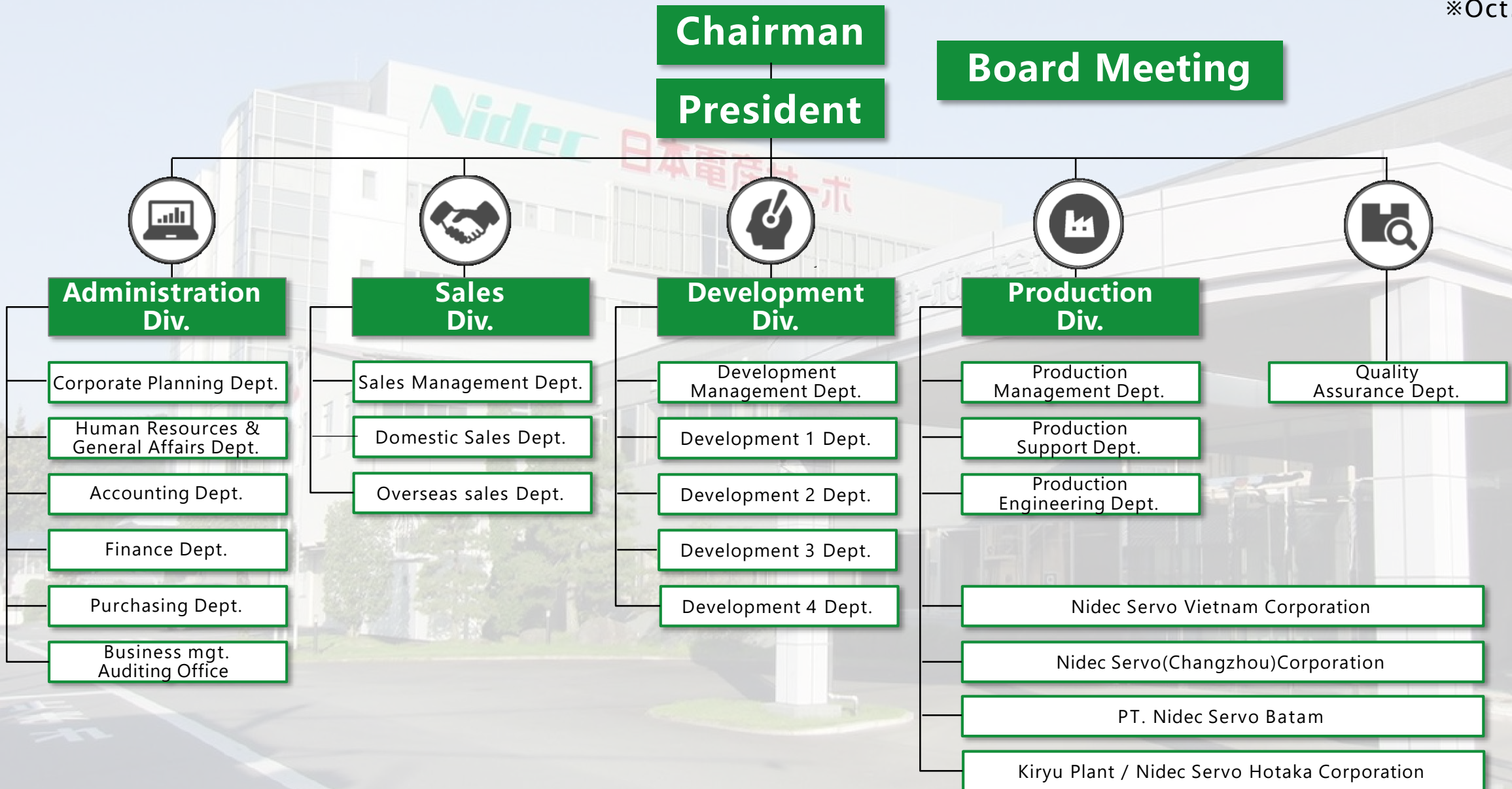


History

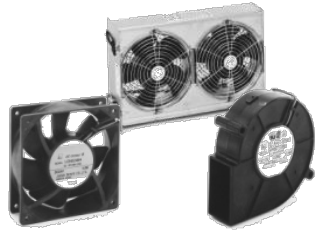
- 
- 1949 Kiryu Eikosha Co., Ltd. founded
 - 1951 Started manufacturing and sales for servo motors as the first company in Japan
 - 1960 Changed company name to Japan Servo., Ltd
Relocated Headquarters to Chiyoda-ku, Tokyo
 - 1986 Established Japan Servo Hotaka Co., Ltd
 - 1995 Established Changzhou Servo Motors Co., Ltd. in China
 - 2007 Merged with the Nidec Corporation Group
Established Kiryu Technical Center
 - 2008 Changed company name to Nidec Servo Corporation
Relocated the headquarter to Kiryu-shi, Gunma
 - 2009 Established Nidec Servo Vietnam Corporation
 - 2010 Wholly owned by Nidec Corporation
 - 2018 Certified IATF 16949

Organization

※Oct. 2019



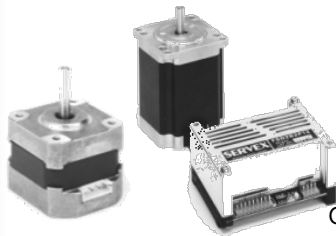
Major product group & Application



Fans & Blowers

DC Fan, AC Fan, DC Blower, Ass'y
For cooling, exhaust, suction,
and air circulation applications

Cell Phone Base Station, Router, Server, Power Unit, OA Equipment, Car, Home Appliance, House/Building Equipment, Textile Machinery



Stepping Motors

**Motor Circuit Integ. Motor
Motor & Circuit Board**
For the cases that high-speed response
and position accuracy are required

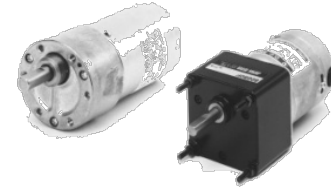
OA Equipment, Semi Conductor Manufacturing, Monetary Equipment Surveillance Camera, Lighting, Construction Machinery



Brushless DC Motors

AC/DC Motor Motor & Circuit Board
For applications that require high efficiency
and long life

Commercial Refrigerator, OA Equipment, Monetary Equipment, Bath Ventilation, Industrial Drone, Medical Equipment, Measuring Equipment, Working Machine, Home Appliance



DC Motors

Motor & Gear Head Ass'y
For applications that require high efficiency /
controllability

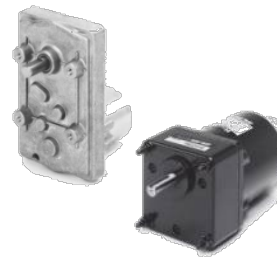
OA Equipment, Amusement Equipment, Working Machine, Banking Machine, Agricultural Machinery, Medicine Dispensing Machine, Car, Vending Machine, Home Appliance, Medical Equipment, Test Equipment



System Equipment

**Ice Maker, Medical Equipment, Medical
Blood Pump**
For special applications / custom products

Ice Maker for Refrigerator, Medical Equipment, Test Equipment, Agricultural Machinery, Home/Building Equipment, Industrial Machinery



AC Motors & GH

**Induction & Gear Head
Shaded-pool Motors, Synchronous Motor**
For applications that a constant speed rotation
/ stop system is required

Working Machine, Home/Building Equipment, Banking Machine, Agricultural Machinery, Medicine Dispensing Equipment, Home Appliance, Measuring Equipment, Food Processing Machinery



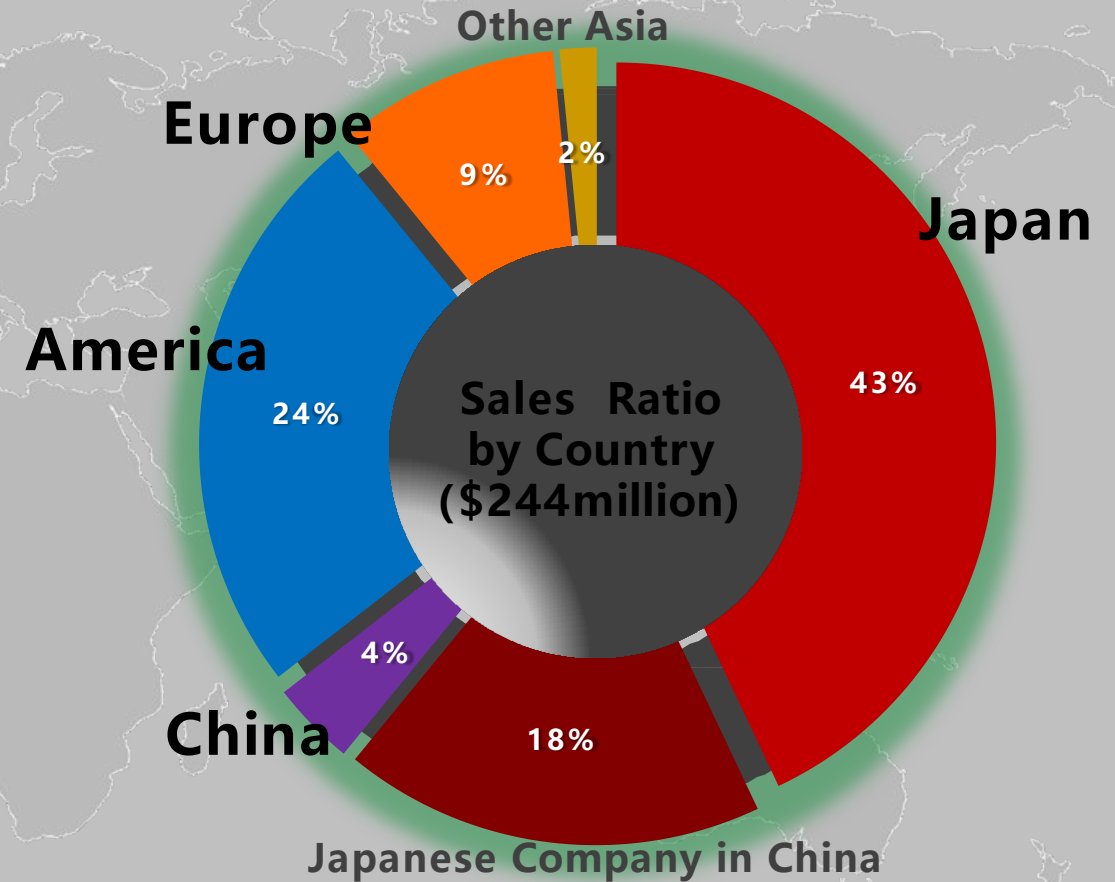
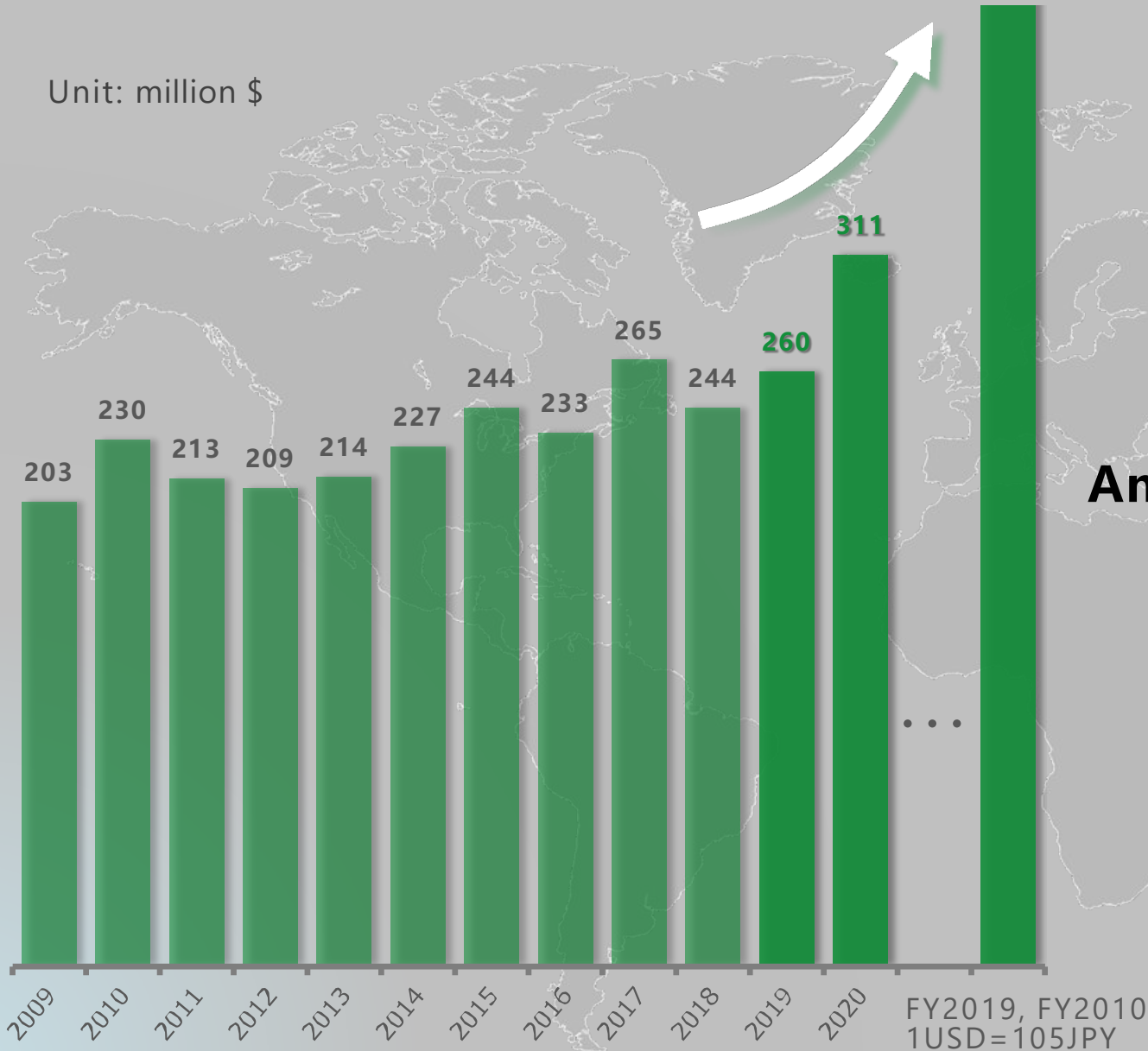
Sensors

Slip Ring, Potentiometer
For motors that require special applications / controls

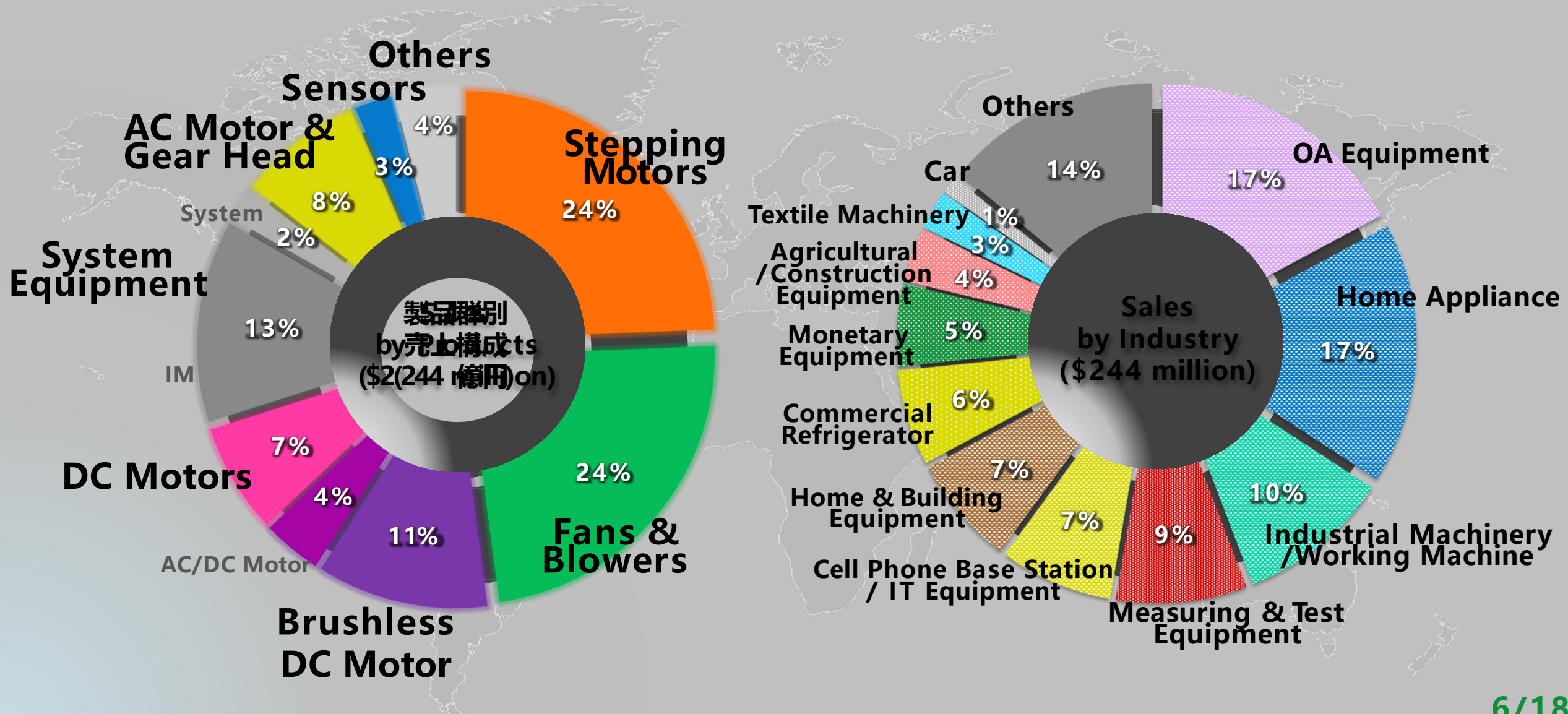
Surveillance Camera, Semi Conductor Manufacturing Machine, Printing Machine, Construction Machinery, Lighting Equipment, OA Equipment, Test Equipment

Sales trends · Sales Ratio by Country (FY18 results)

Unit: million \$



Sales by Products & Industry (FY18 results)



Main Customer

FAN / Blower



(Cell Phone Base)



(Server/Router)



(Car)



(Home Appliance)



(Power Unit)

Hybrid Stepping Motor



(OA)



(Electronic Assembly Equipment)



(Surveillance Camera)



(Monetary Equipment)



(Medical Equipment)



(Textile Machinery)



(Construction machinery)

Brushless DC Motor



(Home elevator)



(Commercial refrigerator)



HOSHIZAKI



(Home elevator)



(Blender)



(Conveyer system)



(Car)

DC Motor



(Monetary Equipment)



(Medical Equipment)



(OA)



(Plotter)



(Home/Building Equipment)



(Test Equipment)



(Material handling)

System Equipment



(Ice Maker)



(Medical Equipment)



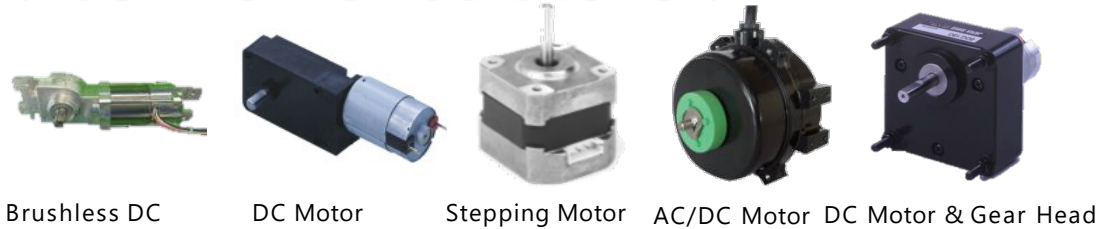
(Home/Building Equipment)



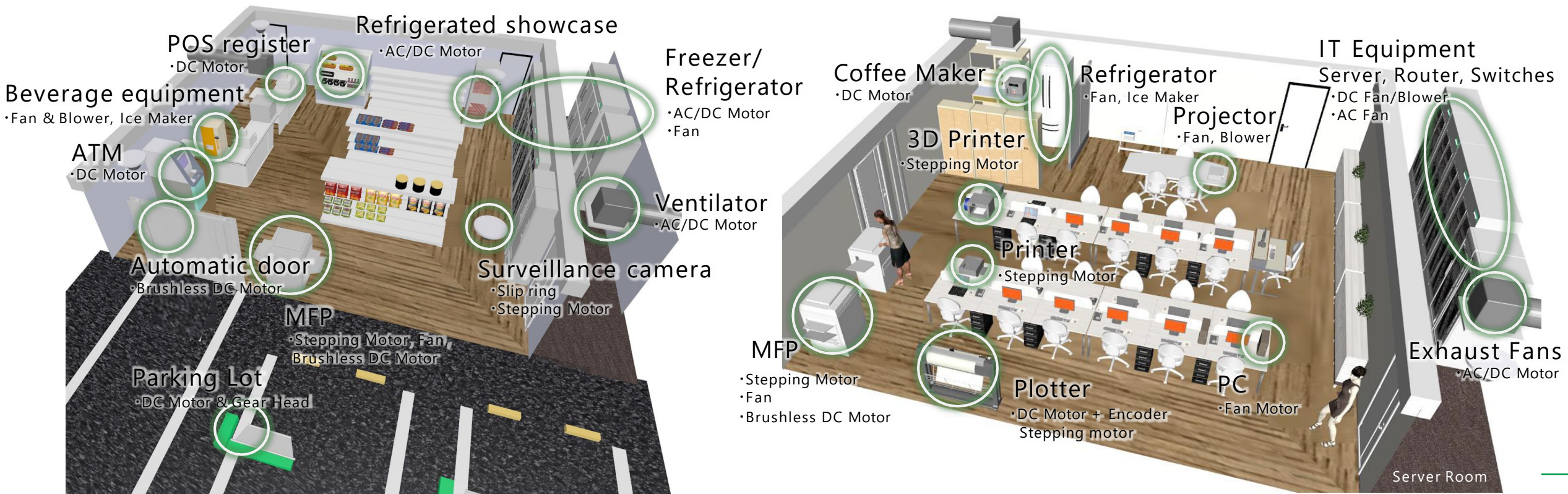
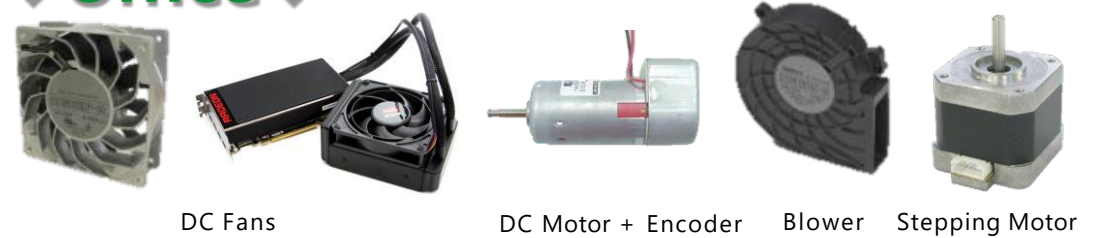
(Specimen examination device)

Application Introduction①

◆ Convenience store ◆



◆ Office ◆

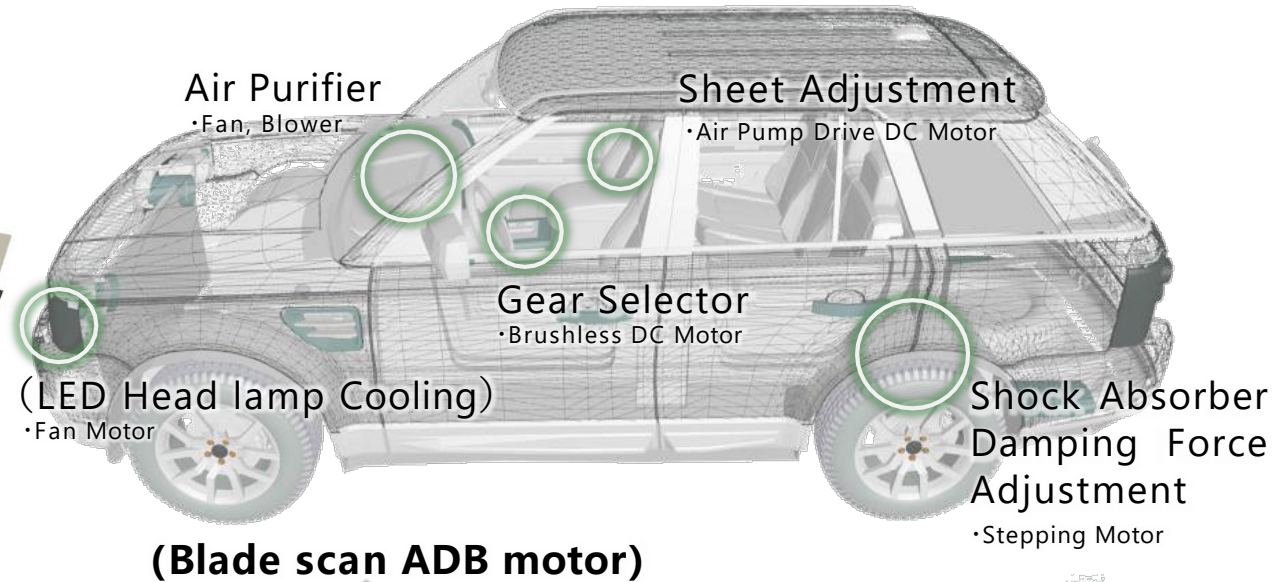
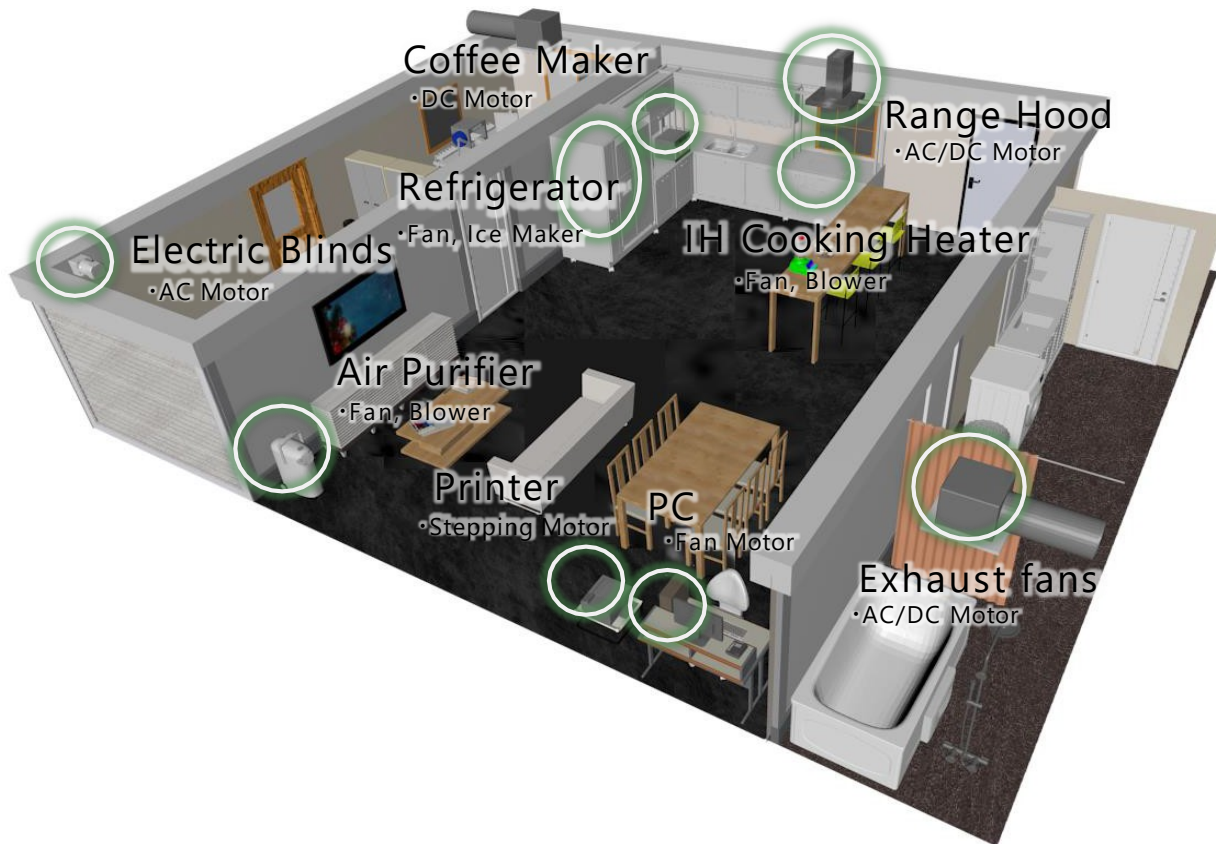
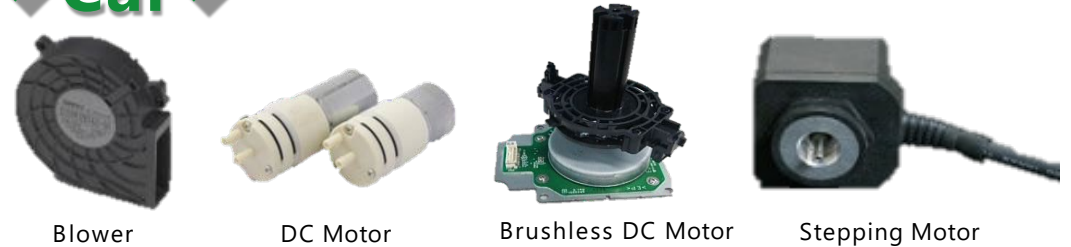


Application Introduction②

◆Housing◆



◆Car◆



Application Introduction③

◆ Hospital ◆



Stepping Motor



Blood Pump



AC Fan

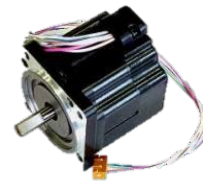


DC Fan



DC Motor

◆ Factory ◆



Brushless DC Motor



AC Motor



Stepping Motor



Slip Ring

3D Image Discrimination Machine

- Stepping Motor

Oxygen Compressor

- Blower

Artificial Dialyzer

- Syringe Pump
- Blood Pump

Analysis Equipment

- Blower

CT Scanner

- AC Fan

Power Supply

- Fan

Air Cleaner

- AC/DC Motor
- Fan, Blower

Beverage Machine

- Fan

Money Handling Machine

- Fan Motor
- DC Motor

PC

- Fan Motor

Automatic Rod

Goods Supplier

- AC Motor

Wire Electric Discharge

- Brushless DC Motor

Weight Sorting Machine

- Brushless DC Motor

X-ray Foreign Object Detector

- Brushless DC Motor

Transport Equipment roller Drive

- Brushless DC Motor

Surveillance Camera

- Slip ring
- Stepping Motor

Chip Mounter

- Stepping Motor

Direct Acting Actuator

- Stepping Motor

Forklift

- Stepping Motor

Global Network

Nidec America Corporation
(Massachusetts)



Nidec Europe B.V.
(Netherlands)



Nidec (Shanghai)
International Trading Co., Ltd.



- Headquarters
- Sales Office
- Manufacturing Factory

Nidec Servo Hotaka
Corporation



Headquarters



Nagoya

Osaka

Tokyo

Kiryu Plant



PT. Nidec Servo Batam
(Indonesia)



Nidec Servo Vietnam
Corporation
(Ho Chi Minh)



Nidec (H.K.) Co., Ltd.

Nidec Servo(Changzhou)
Corporation
(Changzhou)



Kiryu Plant

○Address: Kiryu-shi,
Gunma, Japan

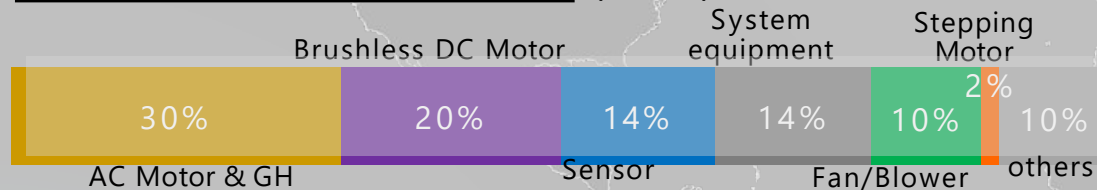
○Established: April, 1949

○Employees: 184 (as of E/Mar 2018)

○Production Volume: 3.0 billion yen(FY18)



Production ratio results (FY18)



Production results (FY18 results) unit: Thousand Unit

Product Category	(Quantity base)
AC Motor & GH	332
Brushless DC Motor	118
Sensor	73
System equipment	52
Fan/Blower	6
Stepping Motor	60

Nidec Servo Hotaka Corporation

○Address : Azumino-city,
Nagano, Japan

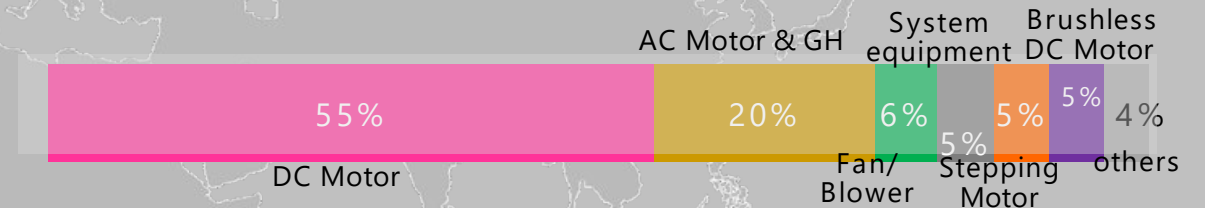
○Established : April, 1986

○Employees : 56 (as of E/Mar 2018)

○Production Volume : 2.0 billion yen(FY18)



Production ratio results (FY18)



Production results (FY18 results) unit: Thousand Unit

Product Category	(Quantity base)
DC Motor	1,049
AC Motor & GH	228
Fan/Blower	13
System equipment	26
Stepping Motor	68
Brushless DC Motor	33

Overseas Factory

Nidec Servo(Changzhou)Corporation

- Address : Changzhou City, Jiangsu Province, P.R.China
- Established : January, 1995
- Employees : 585 (as of E/Mar 2018)
- Production Volume : 5.0 billion yen(FY18)



Nidec Servo Vietnam Corporation

- Address : Ho Chi Minh City, Vietnam
- Established : January, 2009
- Employees : 1,328 (as of E/Mar 2018)
- Production Volume : 10.5 billion yen(FY18)



Production ratio results (FY18)

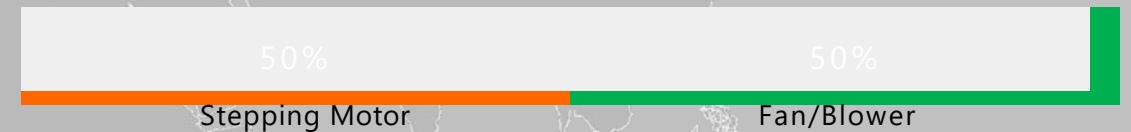


Production results (FY18 results) unit: Thousand Unit

(Quantity base)

Brushless DC Motor	1,809
AC Motor & GH	1,383
DC Motor	1,538
Fan/Blower	493
Sensor	143

Production ratio results (FY18)



Production results (FY18 results) unit: Thousand Unit

(Quantity base)

Stepping Motor	9,710
Fan/Blower	6,044

Nidec Servo has applied ISO9001 in 1994 as the first company of a small motor manufacturer in Japan.

⇒ All manufacturing companies under Nidec Servo in the world have already applied ISO9001.

Nidec Servo has applied ISO14001 in 1998 as the first company of a motor manufacturing facility in Japan.

⇒ We have developed environmental management system and activities in all of our global production facilities including our headquarters.

Nidec Servo has applied IATF16949 in 2018



CSR

Nidec strives to achieve sustainable business growth by harmonizing with stakeholders, society, and the environment, while being cognizant of the social responsibility of being the "world's No.1 comprehensive motor manufacturer."



What Shapes Our CSR

We will implement the following three actions according to the spirits of the mission statement and the three basic management creeds.

- ① social contribution through business activities.
- ② sincere business management.
- ③ social contribution through non-business activities.

Nidec Group Network



主な取扱い製品カテゴリー Major Product Category

- R** ロボティクス
Robotics
- IT** IT・OA・モバイル・光学機器
IT/Office Automation/Mobile Devices/Optical Components
- T** 触覚デバイス
Tactile Devices
- Io** IoT製品
IoT Products (Internet of Things Products)
- A** 車載
Automotive
- HA** 家電
Home Appliances
- HR** 住設機器
Home/Residential
- M** 医療・ヘルスケア
Medical/Health Care
- E** 電子部品・センサ
Electronic Parts/Sensors
- C** 商業・業務用
Commercial
- ID** 産業
Industrial
- P** 工程設備・検査装置
Processing/Inspection Equipment
- O** その他製品
Other Products

日本電産グループは308社が43か国に進出しております(2017年9月20日現在)。
進出しているエリアは上記マップを色付けております。

The Nidec Group has grown to encompass 308 companies in 43 countries (September 20, 2017). Nidec has expanded its operations into all of the areas shown in green on the map above.

ELEKTRONIK **Blume**

Christoph Haßenpflug

BLUME ELEKTRONIK DISTRIBUTION GMBH

TECCENTER 1 | 31162 | BAD SALZDETFURTH

FON:(0 50 63) 27 12-228 | FAX:(0 50 63) 27 12-12

EMAIL: C.HASSENPFUG@BLUME-ELEKTRONIK.DE

WWW.BLUME-ELEKTRONIK.DE

partnership in excellence

Nidec

All for dreams