



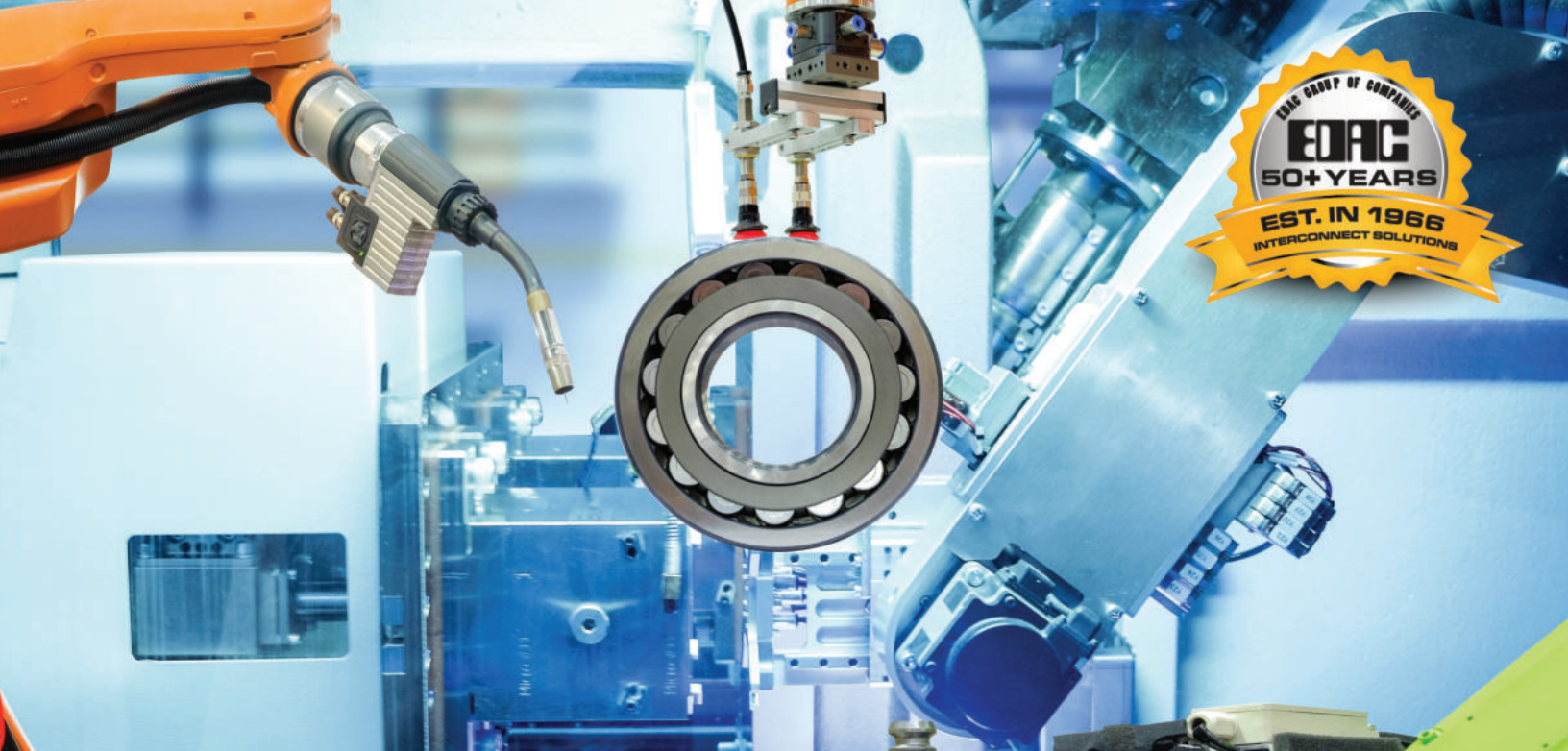
# CARD EDGE CONNECTORS

---

**EDAC**

[www.edac.net](http://www.edac.net)



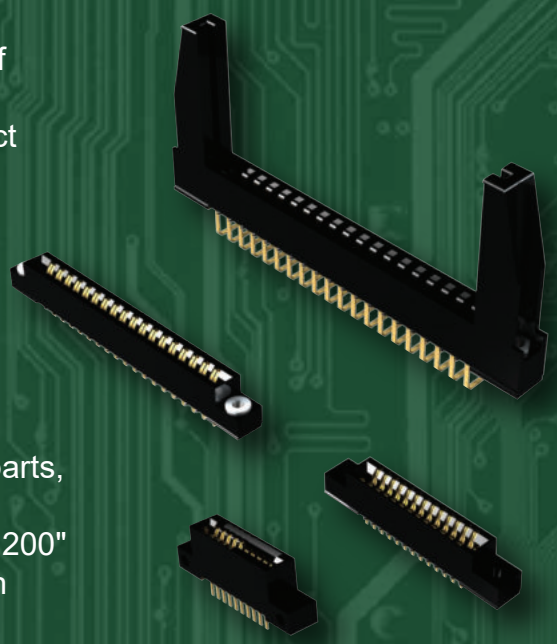


# Card Edge Connectors

One of EDAC's original product families, the Cardedge+ family of card edge connectors has grown to become one of the largest offerings available in the market. Available in a number of contact spacings, with multiple options for contact terminations, plating thicknesses and mounting styles, providing our customers more flexibility with their designs.

## Features

- Card Edge connectors available in excess of 350,000 standard parts, and capabilities to produce custom variations
- Contact spacings of 0.050", 0.100", 0.125", 0.150", 0.156" and 0.200"
- Selective gold plating on contact mating area or gold all over with nickel under plating
- PCB thru-hole, wirewrap, solder eyelet, extender board tail, and other specialized contact options
- From 2 to 188 contacts in single, bridged, and dual rows with or without card supports



[www.edac.net](http://www.edac.net)    

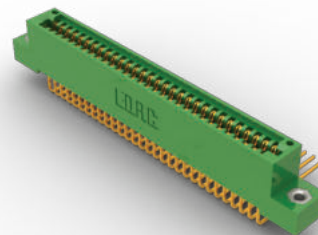
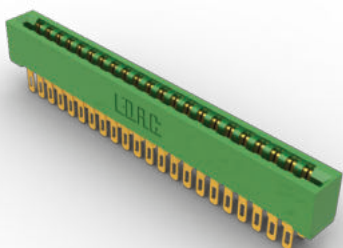


## Card Edge Connectors

Series	Contact Pitch	Row Spacing	No. of Contacts	High Temp. Insulator	Contact Options	Mounting Options	Polarization
243	0.200" (5.08 mm)	0.200" (5.08 mm)	02-06	No	1	1	Yes
305/315/ 355	0.156" (3.96 mm)	0.140" (3.56 mm)	12-86	Yes	5	10	Yes
306/316/ 356	0.156" (3.96 mm)	Single Row	06-43	Yes	3	10	Yes
307/357	0.156" (3.96 mm)	0.200" (5.08 mm)	6-88	Yes	25	10	Yes
310	0.156" (3.96 mm)	0.200" (5.08 mm)	30 or 60	Yes	18	6	Yes
317	0.156" (3.96 mm)	0.200" (5.08 mm)	06-86	Yes	5	7	Yes
325	0.100" (2.54 mm)	0.300" (7.62 mm)	05-122	Yes	3	4	Yes
322	0.156" (3.96 mm)	0.200" (5.08 mm)	22 or 44	Yes	25	3	Yes
333	0.156" (3.96 mm)	0.200" (5.08 mm)	06-86	Yes	14	7	Yes
337/387	0.156" (3.96 mm)	0.200" (5.08 mm)	06-86	Yes	14	10	Yes
338	0.156" (3.96 mm)	0.200" (5.08 mm)	10-56	Yes	1	9	Yes
341/391	0.100" (2.54 mm)	0.140" (3.56 mm)	05-120	Yes	8	6	Yes
342/392	0.100" (2.54 mm)	0.200" (5.08 mm)	05-116	Yes	14	7	Yes
345/395	0.100" (2.54 mm)	0.200" (5.08 mm)	05-144	Yes	15	10	Yes
346/396	0.125" (2.50 mm)	0.250" (6.35 mm)	05-100	Yes	12	10	Yes
368	0.156" (2.00 mm)	0.200" (5.08 mm)	04-06	Yes	2	1	Yes
379	0.150" (3.81 mm)	0.200" (5.08 mm)	06-64	Yes	11	6	Yes
395AT	0.100" (2.54 mm)	0.200" (5.08 mm)	98	Yes	13	1	Yes

Rugged Board to Board Connections

High Reliability Backplane Interconnect solution



For More Information  
[www.edac.net](http://www.edac.net)



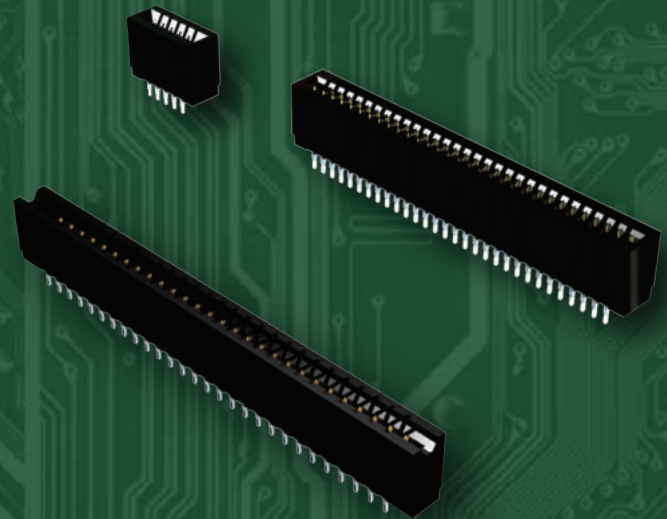


# Pressfit Card Edge Connectors

EDAC offers a very broad range of press-fit card edge connectors. Our Edgefit product utilizes a contact design that allows for ease of assembly into the PCB with the use of simple flat rock tooling. Once installed, this solderless connection provides superior shock and vibration resistance while also providing significant labour savings.

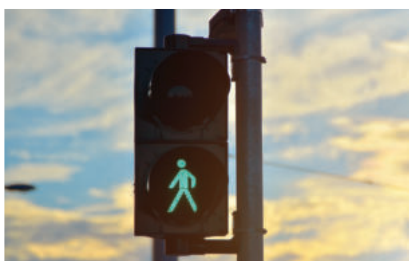
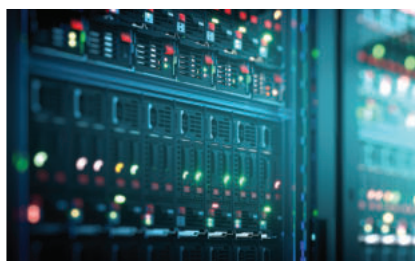
## Features

- 0.100" (2.54mm) to 0.156" (3.96mm) contact spacing
- Single or dual row up to 150 contacts
- Press fit compliant section for gas tight connection and solderless operations
- Accepts between and in contact polarizing keys
- Low profile or high profile body available
- Contact termination options include PC tail or wire wrap
- Tools available for installation, contact removal, flat rock press to board



# EDAC

[www.edac.net](http://www.edac.net)

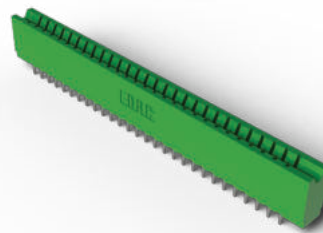
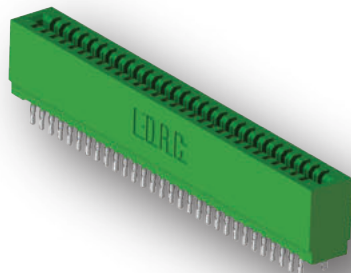
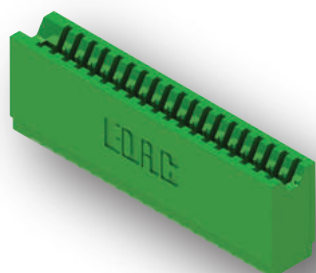


## Pressfit Card Edge Connectors

Series	Contact Pitch	Row Spacing	No. of Contacts	High Temp. Insulator	Contact Options	Mounting Options	Polarization
725 Low Profile	0.100" (2.54 mm)	0.200" (5.08 mm)	05-150	Yes	7	1	Yes
745 High Profile	0.100" (2.54 mm)	0.200" (5.08 mm)	05-150	Yes	7	2	Yes
726 Low Profile	0.125" (3.18 mm)	0.250" (6.35 mm)	05-120	Yes	7	1	Yes
746 High Profile	0.125" (3.18 mm)	0.250" (6.35 mm)	05-120	Yes	7	2	Yes
717 Low Profile	0.156" (3.96 mm)	0.200" (5.08 mm)	05-86	Yes	7	1	Yes
737 High Profile	0.156" (3.96 mm)	0.200" (5.08 mm)	05-86	Yes	7	2	Yes

Rugged Board to Board Connections

High Reliability Backplane Interconnect solution



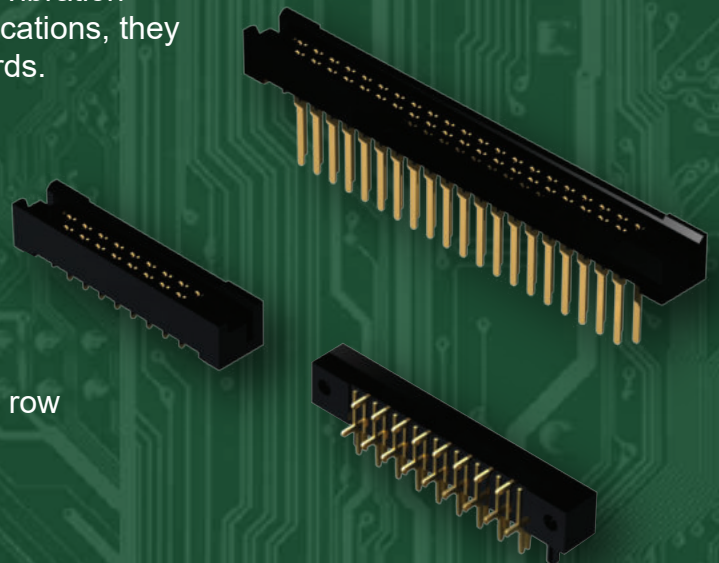


# Metal to Metal Card Edge Connectors

The EDAC E-Met family is a two piece, metal to metal, high reliability connector solution. Utilizing our Edacon hermaphroditic contacts, the fork-like design incorporates four mating surfaces providing a gas tight connection with high shock and vibration resistance. For board to board, or wire to board applications, they can be used with 0.062" or 0.093" printed circuit boards.

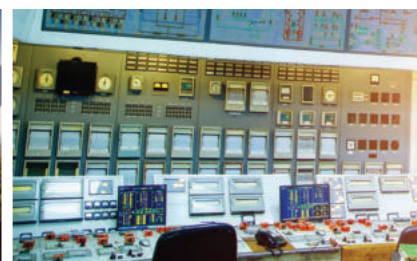
## Features

- Edacon hermaphroditic contact mating design
- High shock and vibration resistance with 10 amp current rating
- 0.200" (5.08mm) contact spacing X 0.125" (3.18mm) row spacing with staggered grid
- Plug termination is a PC tail
- Receptacle terminations include PC tail, wire hole and wire wrap



# EDAC

[www.edac.net](http://www.edac.net)

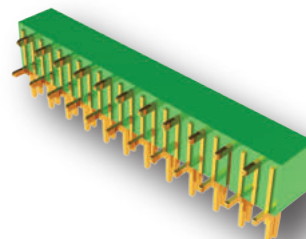
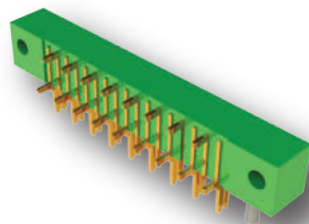
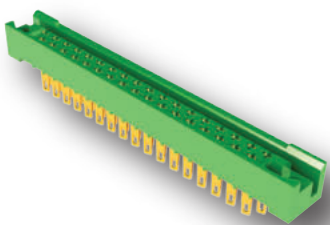


## Metal to Metal Card Edge Connectors

Series	Contact Pitch	Row Spacing	No. of Contacts	High Temp. Insulator	Contact Options	Mounting Options	Polarization
415/438 Receptacle	0.200" (5.08 mm)	0.125" (3.18 mm)	17-47	Yes	6	4	Yes
421/422/423 Plug	0.200" (5.08 mm)	0.300" (7.62 mm)	17-47	Yes	2	1	No
408/424 Receptacle	0.200" (5.08 mm)	0.125" (3.18 mm)	17-41	Yes	11	4	No

Rugged Board to Board Connections

Ultra High continuity & shock and vibration resistant



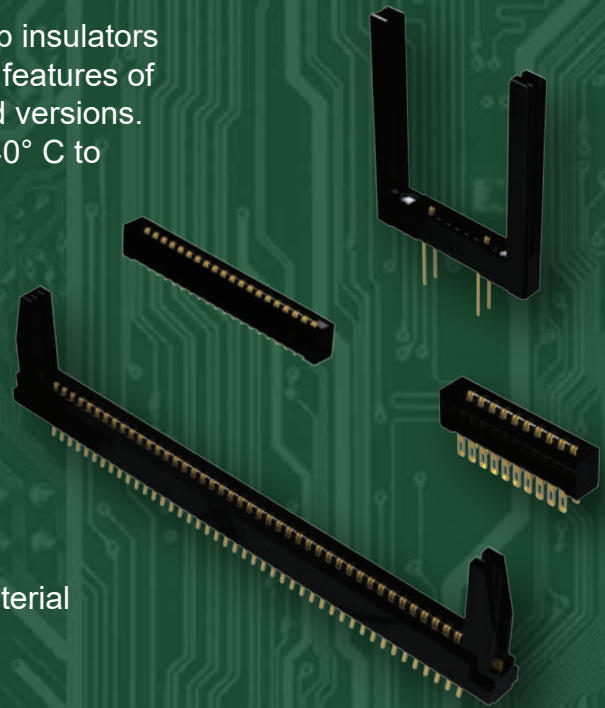


# High Temp Card Edge Connectors

EDAC High Temp card edge connectors utilize high temp insulators ideal for the RoHS infrared soldering process. All of the features of our standard cardedge are available in these ruggedized versions. A solid performer over a wide temperature range from -40° C to +125° C.

## Features

- 6-88 contacts in single or dual row
- 5 amps contact rating
- Wide variety of mounting options
- Standard PC tail, 90 degree bend or wire wrap contacts
- Diallyl Phthalate or Polyphenylene Sulfide high temp material



[www.edac.net](http://www.edac.net)



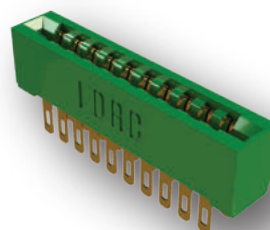
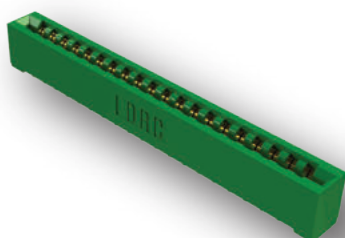
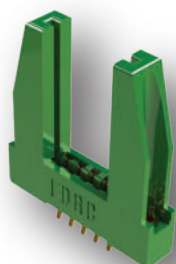


# High Temp Card Edge Connectors

Series	Contact Pitch	Row Pitch	No. of Contacts	High Temp. Insulator	Contact Options	Mounting Options	Polarization Options
<b>Diallyl Phthalate</b>							
807	0.156" (3.96mm)	0.200 (5.08mm)	06-88	Y	25	7	Y
833	0.156" (3.96mm)	0.200 (5.08mm)	06-86	Y	14	7	Y
837	0.156" (3.96mm)	0.200 (5.08mm)	06-86	Y	14	7	Y
842	0.100" (2.54mm)	0.200 (5.08mm)	05-116	Y	14	7	Y
845	0.100" (2.54mm)	0.250 (6.35mm)	05-144	Y	14	7	Y
846	0.125" (3.17mm)	0.200 (5.08mm)	05-100	Y	12	10	Y
<b>Polyphenylene Sulfide</b>							
857	0.156" (3.96mm)	0.200 (5.08mm)	06-88	Y	25	7	Y
887	0.156" (3.96mm)	0.200 (5.08mm)	06-86	Y	14	7	Y
892	0.100" (2.54mm)	0.200 (5.08mm)	05-116	Y	14	7	Y
895	0.100" (2.54mm)	0.200 (5.08mm)	05-144	Y	14	7	Y
896	0.125" (3.17mm)	0.250 (6.35mm)	05-100	Y	12	10	Y

High temp insulator for Rohs process!

Superior Board to Board mating solution...





# High Speed Card Edge Connectors

EDAC PCIE 3.0 and SAS Card Edge Connectors are a high speed board to board interconnect solution. Differential pair signaling provides for low insertion loss in a dense package that conserves valuable board space. Widely used in server backplanes these fine pitch connectors come in a variety of orientations and terminations to meet all design parameters.

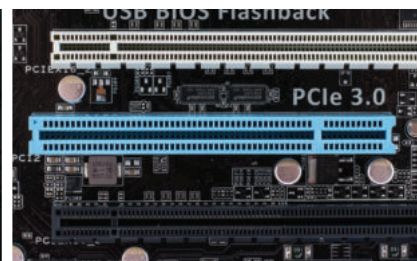
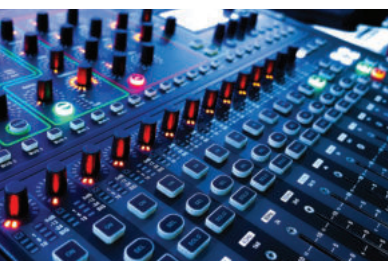
## Features

- PCIE 3.0 available in 20 to 200 contacts
- SAS available 29 or 68 contacts
- Data transmissions up to 21 Gbps
- Vertical or right-angle orientations
- SMT or Press-Fit terminations
- SAS 3.0 and PCIE 3.0 compliant



# EDAC

[www.edac.net](http://www.edac.net)

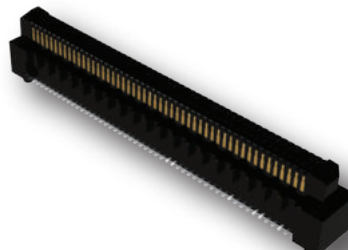
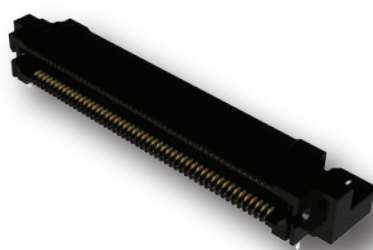
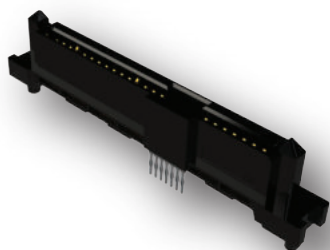


# High Speed Card Edge Connectors

Series	Pitch	Contact	Contact Type	High Temp Ins.	Latching	Data Speed	Orientation
<b>PCIE 3.0</b>							
370	0.8mm	20-200	Through Hole	Y	N	21 Gbps	Vertical
371	0.8mm	100-180	SMT	Y	Y	21 Gbps	Vertical
472	0.8mm	100-150	SMT	Y	Y	19 Gbps	Vertical
473	0.8mm	100-150	SMT	Y	Y	19 Gbps	Rt. Angle
<b>SAS</b>							
270	1.27/0.8mm	29	SMT	Y	N	16 Gbps	Rt. Angle
271	1.27/0.8mm	68	SMT	Y	N	16 Gbps	Vertical
272	1.27/0.8mm	29	Press-Fit	Y	N	16 Gbps	Vertical
273	1.27/0.8mm	29	SMT	Y	N	16 Gbps	Vertical

High Speed connectors for solid data infrastructure

SAS 3.0 and PCIE 3.0 full compliance



**Tel: +1 416 754 3322**  
**customerservice@edac.net**

Established in 1966, EDAC soon became a world leader in providing connectors for Card Edge and Rack & Panel applications. Since then, we have expanded our product offering to include one of the widest ranges of interconnect solutions in the world. Products include D-Sub, Modular Jacks RJ45, USB, HDMI, Inline Plug & Socket, Headers, Waterproof Connectors and Custom Solutions. Our dedicated teams of engineering, customer service, field support, and global distribution partners allow EDAC the opportunity to support many unique applications globally.

www.edac.net    

**Connect with Us . . . Experience Makes the Difference**