



MODULAR JACKS CONNECTORS

EDAC

www.edac.net



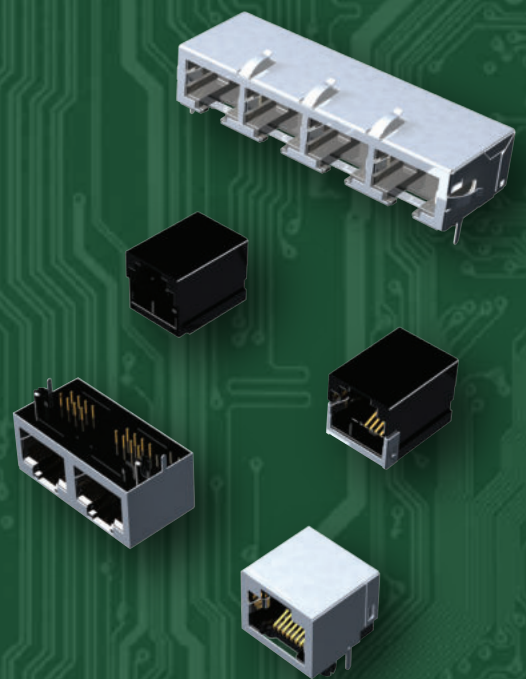


Modular Jack Connectors

The EDAC E-JAX family of Modular Jacks are manufactured to industry standards and are also fully customizable. Single, ganged, or stacked versions are available up to 2 x 8 ports. Shielded or unshielded, with a variety of LED options. SMT and through hole terminations are available in right angle or vertical orientations. Multiple plating options are also available.

Features

- RJ11/RJ45 single or stacked units available in multiple body styles, with or without LEDs, and various mounting options
- Right angle or vertical mount in through hole PCB or SMT
- Gold flash or gold plated contacts, including high thickness gold for telecom
- Shielded front ground, shielded rear ground, unshielded, or face shielded versions
- Up to 8 ports ganged single row or 16 ports stacked dual row
- Optional LEDs in mixed combinations of green, orange, red, or yellow including bi-color variations
- Low or high profile types, keyed or unkeyed, with or without mounting flange



EDAC

www.edac.net

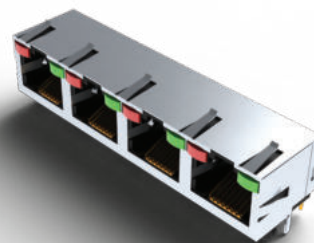
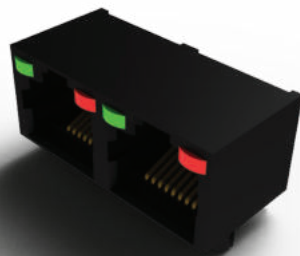


Modular Jack Connectors

Series	Type/ Contacts	No. of Ports	Orientation	No. of Rows	Shielded	Plating	LED's
J20/28/2K	RJ45/8	1	Vertical	1	N	Flash - 50" Gold	N
J21/24/2X	RJ11/4	1	Vertical	1	N	Flash - 50" Gold	N
J2L	RJ45/8	1	Vertical	1	Y	Flash - 50" Gold	N
J2T	RJ45/8	1	45 Degree	1	Y	Flash - 50" Gold	N
J2W	RJ45/32	4	Vertical	1	N	Flash - 50" Gold	Y
J53	RJ11/8	2	RT. Angle	1	N	Flash - 50" Gold	N
J60/93	RJ45/32	4	RT. Angle	1	Y	Flash - 50" Gold	N
J67	RJ45/32	4	RT. Angle	1	N	Flash - 50" Gold	Y
J6A	RJ45/32	2	RT. Angle	1	Y	Flash - 50" Gold	N
J6D/6E/J9P	RJ45/8	1	RT. Angle	1	Y	Flash - 50" Gold	Y
J79	RJ45/8	1	RT. Angle	1	N	Flash - 50" Gold	N
J96	RJ45/16	2	Stacked	2	Y	Flash - 50" Gold	Y
J9F	RJ45/32	4	Stacked	2	N	Flash - 50" Gold	N
J9Q/J6F/JS8	RJ45/8	1	RT. Angle	1	Y	Flash - 50" Gold	N
JF2	RJ45/16	2	Vertical	1	N	Flash - 50" Gold	N
JG2	RJ45/24	3	RT. Angle	1	N	Flash - 50" Gold	N
JPG	RJ45/8	1	Reverse Vert.	1	N	Flash - 50" Gold	N

E-Jax provides an extensive offering of RJ45 standard Modular Jacks

Widest array of options including plating, LED's, EMI fingers and tab orientation



Tel: +1 416 754 3322
customerservice@edac.net

Established in 1966, EDAC soon became a world leader in providing connectors for Card Edge and Rack & Panel applications. Since then, we have expanded our product offering to include one of the widest ranges of interconnect solutions in the world. Products include D-Sub, Modular Jacks RJ45, USB, HDMI, Inline Plug & Socket, Headers, Waterproof Connectors and Custom Solutions. Our dedicated teams of engineering, customer service, field support, and global distribution partners allow EDAC the opportunity to support many unique applications globally.

www.edac.net    

Connect with Us . . . Experience Makes the Difference