



# USB & HDMI CONNECTORS

---

**EDAC**



# USB Connectors

EDAC Standard USB's are available in all types A,B and C in vertical or right angle orientations. USB's combine data and power in a small package. Type C offers ten times the speed of conventional USB's plus cords will mate in either direction.

## Features

- USB Type A, B and C are available
- Up to 10 Gbps communication speed for USB Type C 3.1
- Industry standard plug and play technology
- Hot pluggable
- Compatible with asynchronous and isochronous data transfer methods
- Stacked versions available up to 4 ports



[www.edac.net](http://www.edac.net)





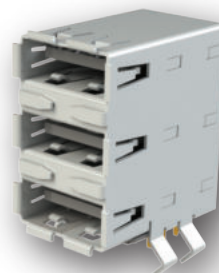
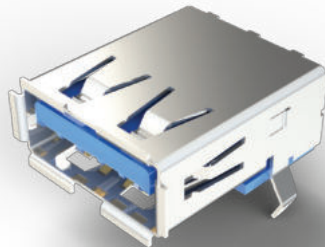
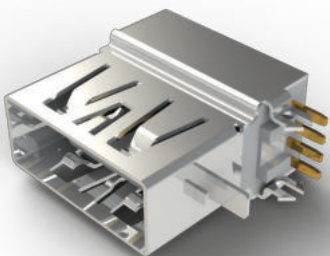
## USB Connectors

Series	Total Contacts	Plating Options	Contact Code	Pkg. Material	Type
690	4	Flash-30u"	Rt Angle/Vertical	PA9T/LCP	A
690	4-5	Flash-30u"	Rt Angle/Vertical	PA9T/LCP	B
690	24	Flash-30u"	Rt Angle/Vertical	PA9T/LCP	B
690	10	Flash-30u"	Rt Angle/Vertical	PA9T/LCP	Micro B
690	20	Flash-30u"	Rt Angle/Vertical	PA9T/LCP	Display Port 3.0



EDAC USB connectors offer power and data transmission in a small package

Type C accepts cables either direction and it is 10 times the speed!



# EDAC

For More Information  
[www.edac.net](http://www.edac.net)





# HDMI Connectors

EDAC HDMI connectors follow industry standards and are available in vertical or right angle orientations. Single or dual port versions are available. These deliver high speed video transmissions resulting in very high resolution images.

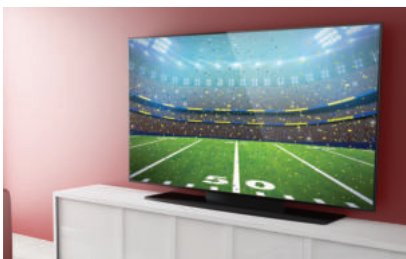
## Features

- Standard 19 pin type A, micro versions, and an automotive shrouded version are available
- Vertical or right angle and single or dual stacked
- Plating options from gold flash to 30u" gold for high insertion cycles
- Hot pluggable
- Synchronous and asynchronous data transfers



# EDAC

[www.edac.net](http://www.edac.net)



## HDMI Connectors

Series	No. of Contacts	Plating Options	Contact Codes	Ins. Material	Type
690	19	Flash-30u"	Rt Angle/Vertical	PA9T/LCP/PA6T/PA66	A
690	19	Flash-30u"	Rt Angle/Vertical	PA9T/LCP/PA6T/PA66	C Mini
690	19	Flash-30u"	Rt Angle/Vertical	PA9T/LCP/PA6T/PA66	D Micro
690	19	Flash-30u"	Rt Angle/Vertical	PA9T/LCP/PA6T/PA66	E
690	19	Flash-30u"	Rt Angle/Vertical	PA9T/LCP/PA6T/PA66	B
690	38	Flash-30u"	Rt Angle/Vertical	PA9T/LCP/PA6T/PA66	A Dual Stack

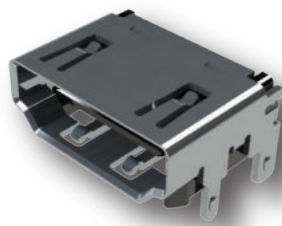
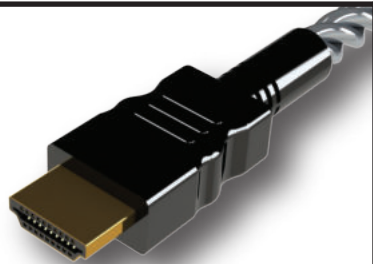
EDAC HDMI connectors deliver superior high resolution video.

Industry standard footprints and board heights to match your designs.

### Receptacle

Series	No. of Contacts	Plating Options	Contact Codes	Ins. Material	Type
691	19	Flash-30u"	Rt Angle/Vertical	PA9T/LCP/PA6T/PA66	A
691	19	Flash-30u"	Rt Angle/Vertical	PA9T/LCP/PA6T/PA66	C Mini
691	19	Flash-30u"	Rt Angle/Vertical	PA9T/LCP/PA6T/PA66	D Micro
691	19	Flash-30u"	Rt Angle/Vertical	PA9T/LCP/PA6T/PA66	E
691	19	Flash-30u"	Rt Angle/Vertical	PA9T/LCP/PA6T/PA66	B
691	38	Flash-30u"	Rt Angle/Vertical	PA9T/LCP/PA6T/PA66	A Dual Stack

### Plugs





# SATA Connectors

EDAC E-Sata Connectors are an established computer bus solution interconnecting mass storage devices in a system. E-Sata has similar infrastructure to standard USB's but utilizes 7 contacts. Both data and power can be transmitted through a single connector.

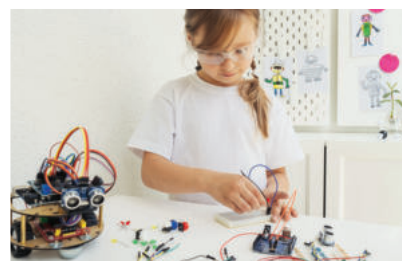
## Features

- Single port 7 contacts
- Plating options from gold flash to 30u" gold
- Right angle or vertical orientation
- Standard or high temp Insulators available
- Synchronous and asynchronous data transfers



# EDAC

[www.edac.net](http://www.edac.net)    





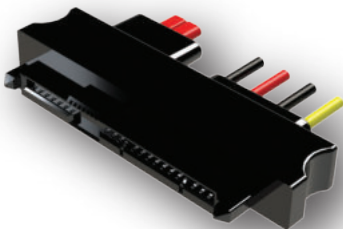
## SATA Connectors

Series	Total No. of Contacts	Plating	Contact Code	Ins. Material	Type
690	07	Flash-30u"	Rt Angle/Vertical	PA9T/LCP	E-SATA



Industry standard product for connecting mass storage devices

E-Sata is utilized both inside and outside servers for external peripherals



For More Information  
[www.edac.net](http://www.edac.net)



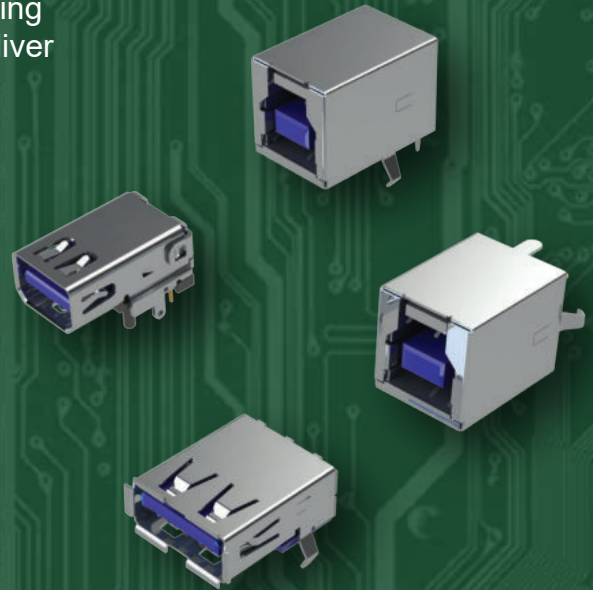


## Display Port Connectors

EDAC USB 3.0 display port connectors are utilized for high speed video interface applications. Hot pluggable and with high mating and retention forces. These durable connectors efficiently deliver video signals at high speeds.

### Features

- Single or dual port Type 3.0 standards
- Up to 5 Gbps communication speed
- Industry standard plug and play technology
- Hot pluggable
- Compatible with asynchronous and isochronous data transfer methods



# EDAC

[www.edac.net](http://www.edac.net)







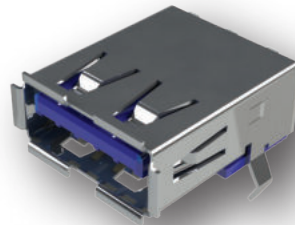
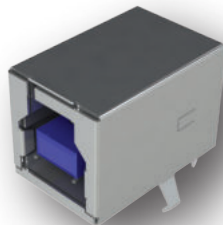
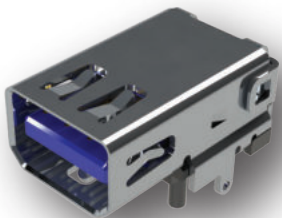
# Display Port Connectors



Series	Contacts	Plating Options	Contact Code
690	20	Flash-30u" gold	1

High speed video signal interface

Hot pluggable with solid mating force!



For More Information  
[www.edac.net](http://www.edac.net)





# Waterproof USB Connectors

Waterproof panel mount USB connectors Type A and B standard and micro are available offering IP67 grade protection. Quarter turn twist and lock bayonet style system offers easy mating and ultra secure connections. IP67 Waterproof board mount USB connectors feature full epoxy sealing of the contacts and an O-ring seal to the panel.

## Features

- Standard USB Type A, Micro USB, Mini USB & bayonet style are available
- 1.2Mbps or 480Mbps communication speeds
- 480Mbps communication speed compatible with USB 2.0 standard
- Compatible with asynchronous and isochronous data transfer methods
- Silicone rubber seals for tight seal to panel
- Bayonet locking system for safe mating under severe vibration or shock conditions
- Micro USB board mount and type C available with all rated IP 67



# EDAC

[www.edac.net](http://www.edac.net)



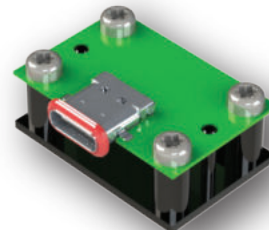


## Waterproof USB Connectors

Series	No. of Contacts	Plating	Contact Codes	Ins. Color	Type
690W	4-5	Flash-30u"	Straight/SMT	Black	A/B Micro B

Solid waterproof connection with superior shock & vibration resistance.

Built to withstand the most harsh environments.



For More Information  
[www.edac.net](http://www.edac.net)



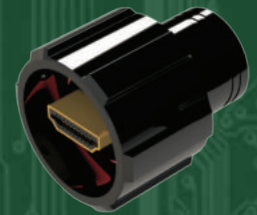


# Waterproof HDMI Connectors

E-seal waterproof HDMI connectors follow industry standards and are available with a quarter turn, twist and lock, bayonet locking system offering easy mating and an ultra secure connection. Fully sealed on the back end with an O-ring seal to the panel insures no water ingress. These IP67 rated connectors are fully submersible and deliver high speed video transmissions resulting in very high resolution images.

## Features

- Plating options from gold flash to 30u" gold plating
- Quarter turn, twist and lock, bayonet style locking mechanism
- Silicone rubber seals and fully potted terminals
- Hot pluggable
- Synchronous or asynchronous high speed data transmissions



# EDAC

[www.edac.net](http://www.edac.net)



## Waterproof HDMI Connectors

Series	No. of Contacts	Plating Options	Contact Codes	Ins. Material	Type
690W	19	Flash-30u"	Rt Angel/Vertical	PA9T/LCP/PA6T/PA66	A
690W	19	Flash-30u"	Rt Angel/Vertical	PA9T/LCP/PA6T/PA66	C Mini
690W	19	Flash-30u"	Rt Angel/Vertical	PA9T/LCP/PA6T/PA66	D Micro
690W	19	Flash-30u"	Rt Angel/Vertical	PA9T/LCP/PA6T/PA66	E
690W	19	Flash-30u"	Rt Angel/Vertical	PA9T/LCP/PA6T/PA66	B
690W	38	Flash-30u"	Rt Angel/Vertical	PA9T/LCP/PA6T/PA66	A Dual Stack

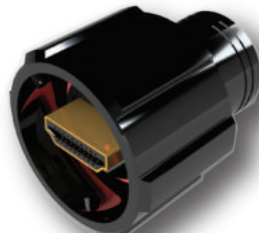
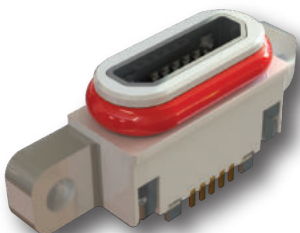
Premium IP67 connector with secure locking mechanism

IP67 waterproof connection with superior shock & vibration resistance!

### Receptacle Waterproof

Series	No. of Contacts	Plating Options	Contact Codes	Ins. Material	Type
691W	19	Flash-30u"	Rt Angel/Vertical	PA9T/LCP/PA6T/PA66	A
691W	19	Flash-30u"	Rt Angel/Vertical	PA9T/LCP/PA6T/PA66	C Mini
691W	19	Flash-30u"	Rt Angel/Vertical	PA9T/LCP/PA6T/PA66	D Micro
691W	19	Flash-30u"	Rt Angel/Vertical	PA9T/LCP/PA6T/PA66	E
691W	19	Flash-30u"	Rt Angel/Vertical	PA9T/LCP/PA6T/PA66	B
691W	38	Flash-30u"	Rt Angel/Vertical	PA9T/LCP/PA6T/PA66	A Dual Stack

### Waterproof Plugs



**Tel: +1 416 754 3322**  
**customerservice@edac.net**

Established in 1966, EDAC soon became a world leader in providing connectors for Card Edge and Rack & Panel applications. Since then, we have expanded our product offering to include one of the widest ranges of interconnect solutions in the world. Products include D-Sub, Modular Jacks RJ45, USB, HDMI, Inline Plug & Socket, Headers, Waterproof Connectors and Custom Solutions. Our dedicated teams of engineering, customer service, field support, and global distribution partners allow EDAC the opportunity to support many unique applications globally.

[www.edac.net](http://www.edac.net)    

**Connect with Us . . . Experience Makes the Difference**