

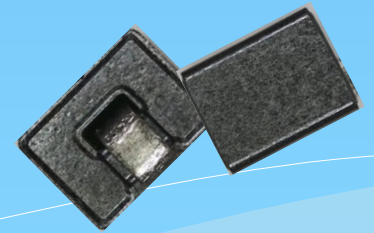
TAI-TECH

Advanced Electronics Co., Ltd.

Ultra High Current Ferrite Beads

BPH Series

FAE Team

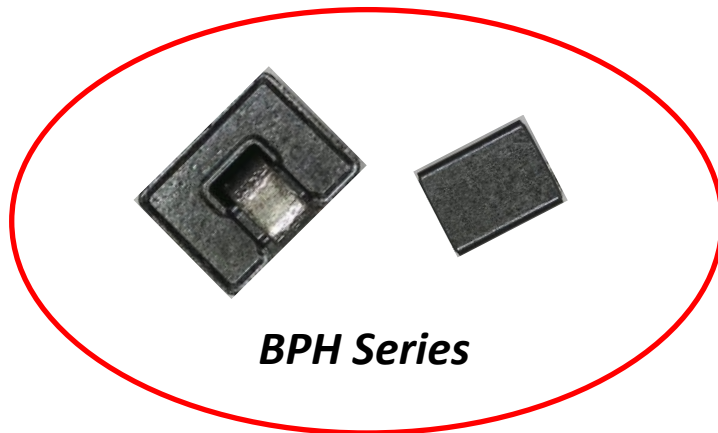


TAI-TECH Advanced Electronics Co., Ltd.
TAI-TECH

BPH Target Marketing



Desktop PC



BPH Series



Motor Driver



NoteBook PC



Power Supply



AP Router



LED-TV



SET-TOP-BOX

For Power EMI suppression

Why Used BPH Series



Replace Power Inductor



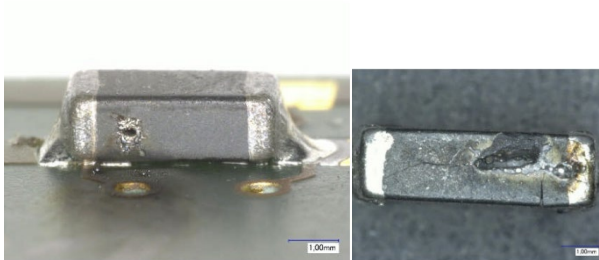
Cost Savings



Replace DIP Bead Core



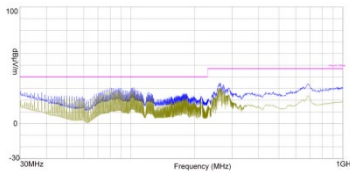
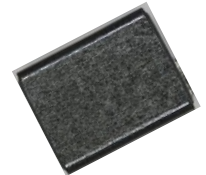
Manpower Savings



Replace Multilayer Bead



**Improve Inrush
Endurance**



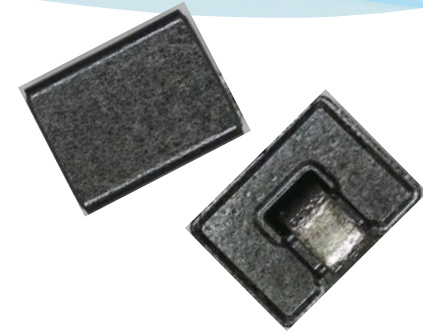
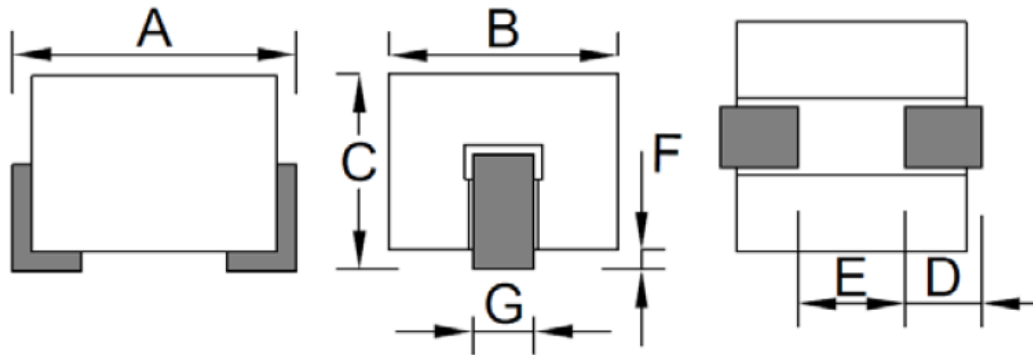
Increase Usage



Improve EMI

BHP Series Dimensions

Dimension

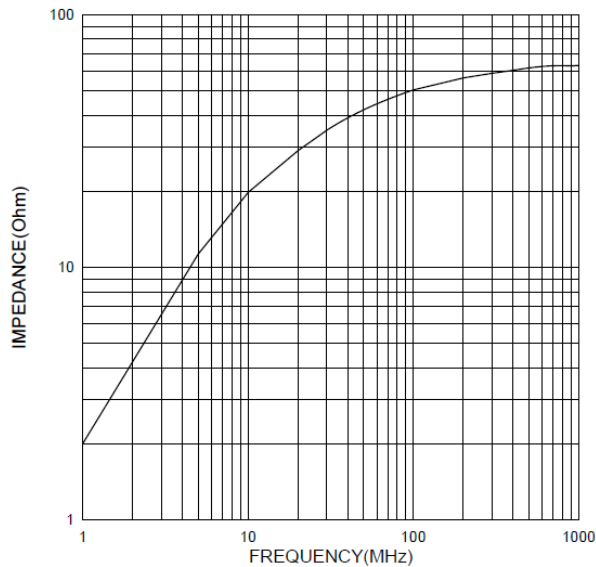


TAI-TECH Part Number	PRODUCT SIZE				
	A(mm)	B(mm)	C(mm)	D(mm)	E(mm)
BPH853225W4-101T	9.0 ±0.40	3.1 ±0.15	2.8 ±0.25	1.50±0.50	1.25±0.20
BPH323023W5-400T	3.08 ±0.15	2.9 ±0.10	2.20 ±0.10	0.8 ±0.20	0.85 ±0.10
BPH403025W4-530T	4.30 ~ 5.10	3.1 ±0.15	2.70 ~ 3.1	1.35±0.20	1.35±0.15

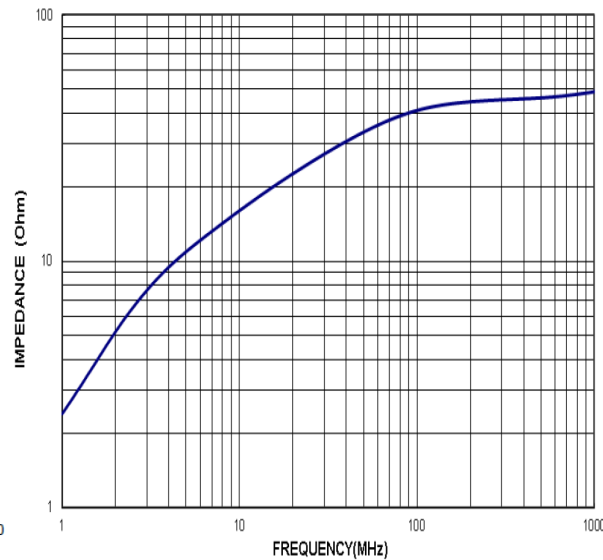
BPH Series Performance

TAI-TECH Part Number	ELECTRICAL			ELECTRICAL			DCR (mΩ) Max.	Rated Current(A)	
	Impedance (Ω)	Tolerance (%)	Test Frequency (MHz)	Impedance (Ω)	Tolerance (%)	Test Frequency (MHz)		ΔT=40°C TYP.	ΔT=60°C TYP.
BPH403025W4-530T	35	±25	25	53	±25	100	0.6	35.0(1) 15.0(2)	45.0(1) 18.0(2)
BPH323023W5-400T	23	±25	25	40	±25	100	0.6	21.0(1) 15.0(2)	26.0(1) 18.0(2)
BPH853225W4-101T	65	±25	25	100	±25	100	1	35.0(1) 18.0(2)	45.0(1) 22.0(2)

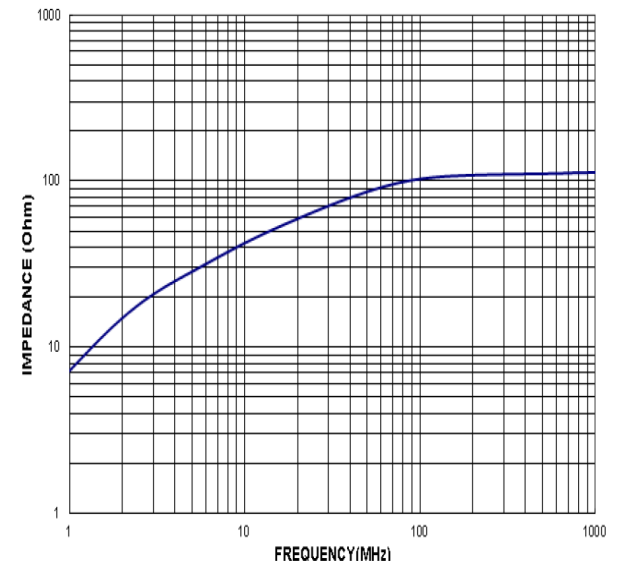
BPH403025W4-530T



BPH323023W5-400T

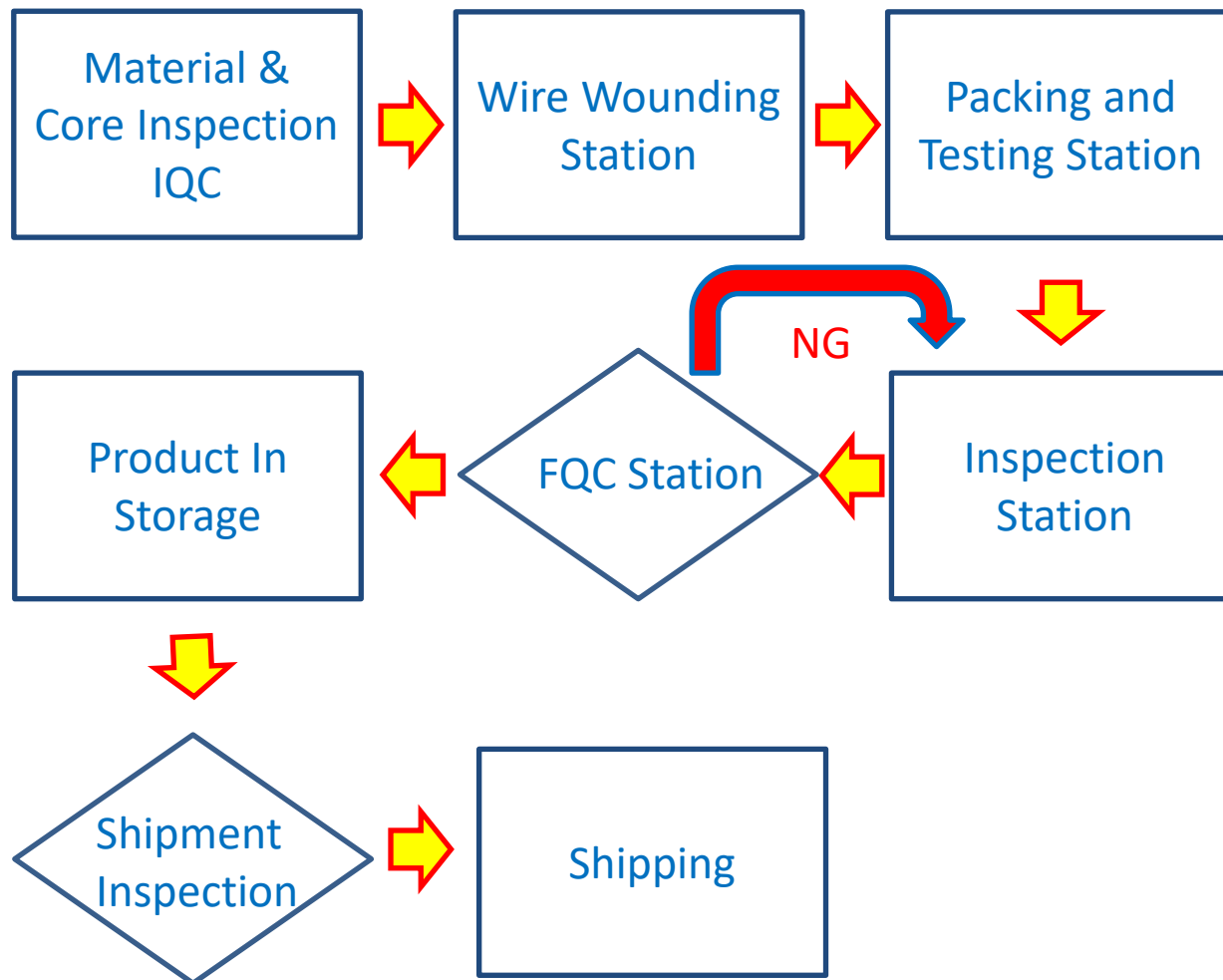


BPH853225W4-101T



BPH processing

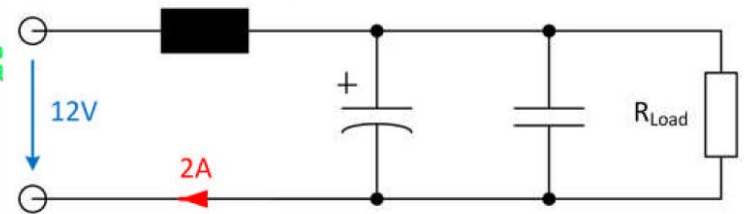
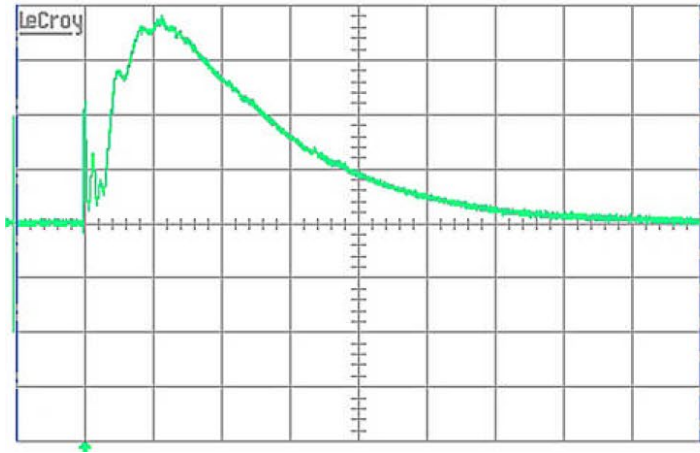
Product Procedure



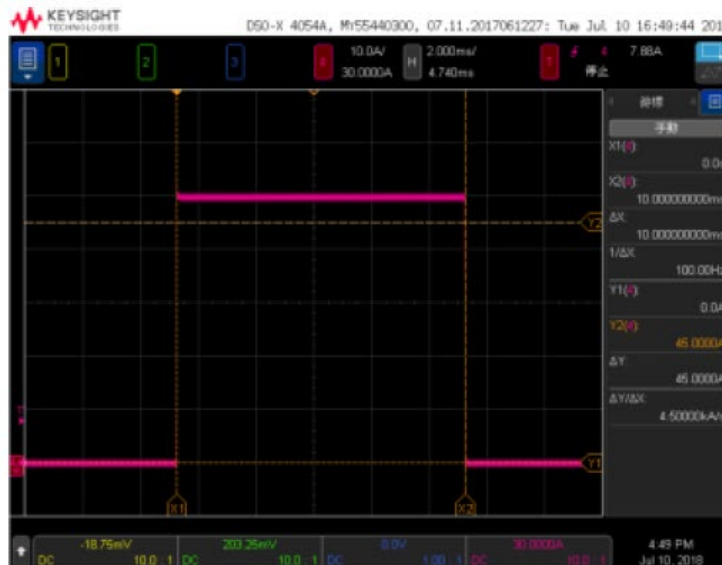
BPH Inrush Simulation

BPH403025W4-530T Inrush Current Testing

Real
Waveform



Simulation
Waveform

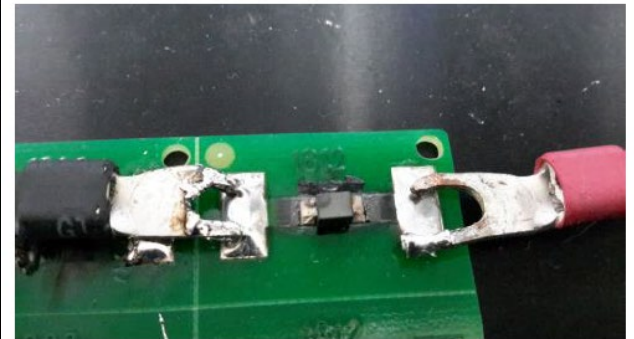
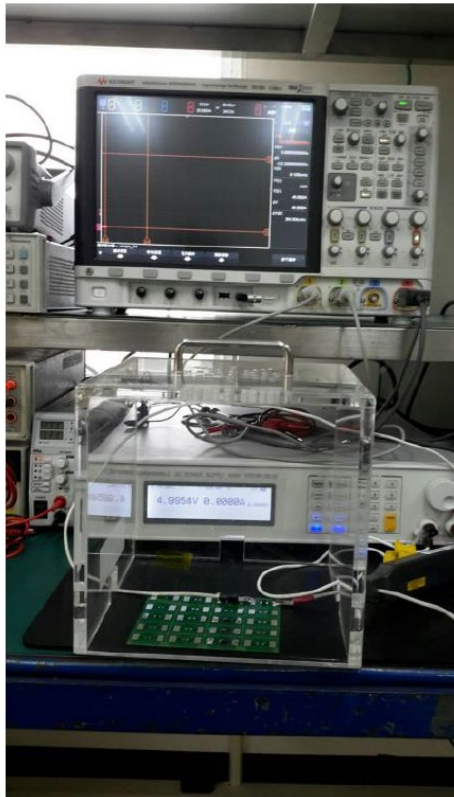


BPH Inrush Simulation result

BPH403025W4-530T Inrush Current Testing

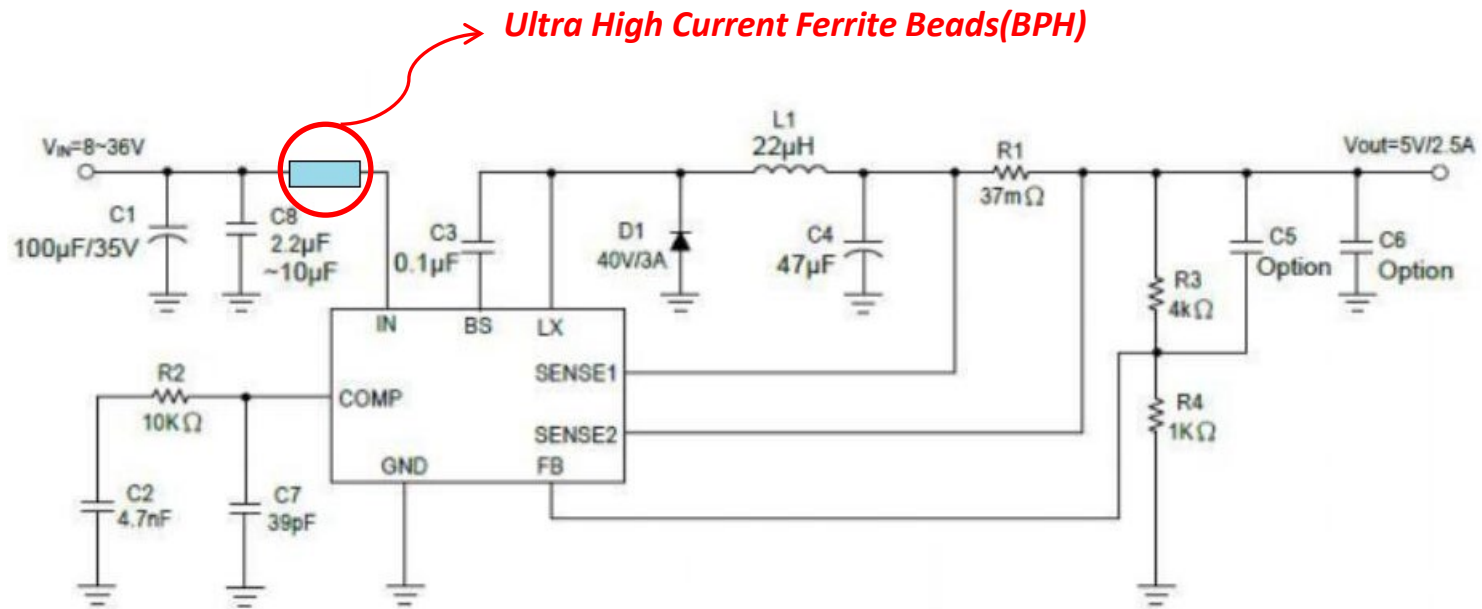
[Short time inrush test]

	Current	45A	45A	45A	45A	45A	45A
Time	(mS)	10	20	30	100	1000	5000
Situation	(Pass/fail)	PASS	PASS	PASS	PASS	PASS	PASS



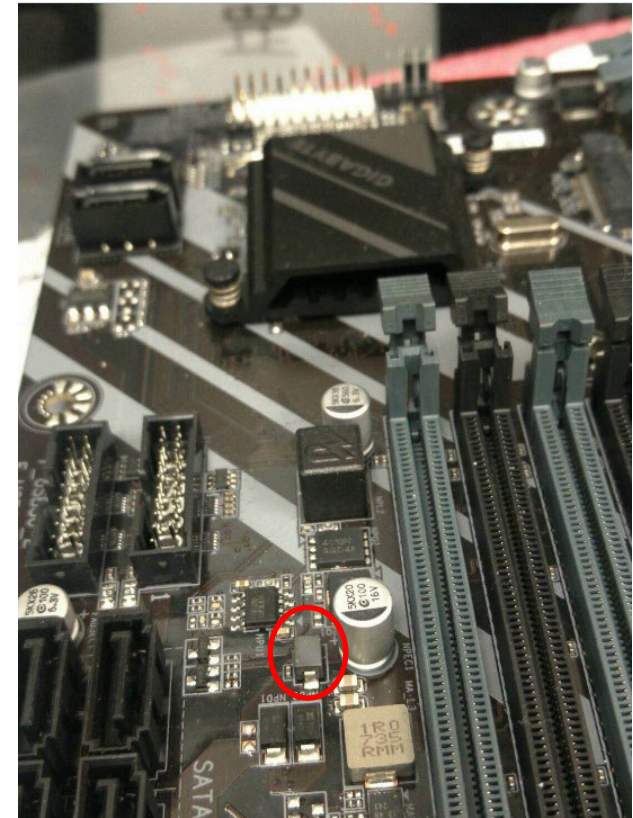
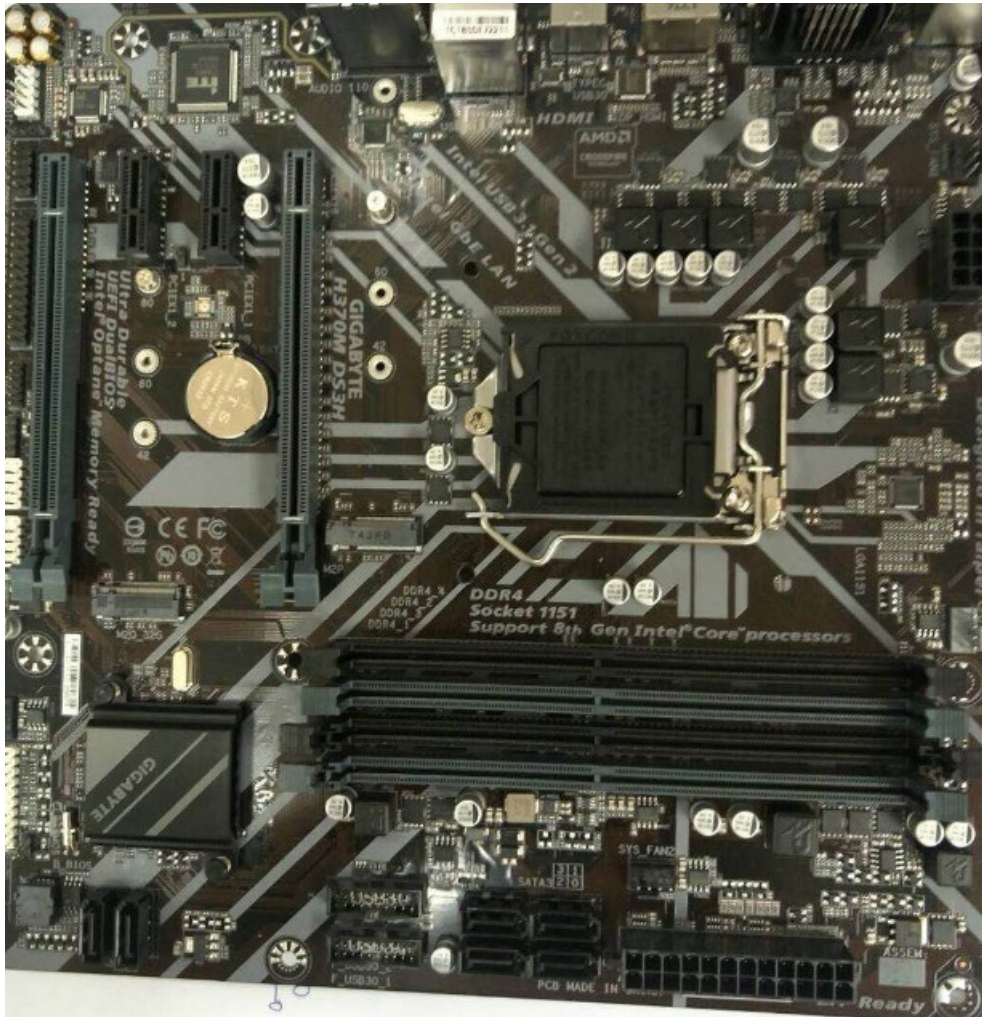
BPH Application As Input Choke

DC-DC Buck Product Application

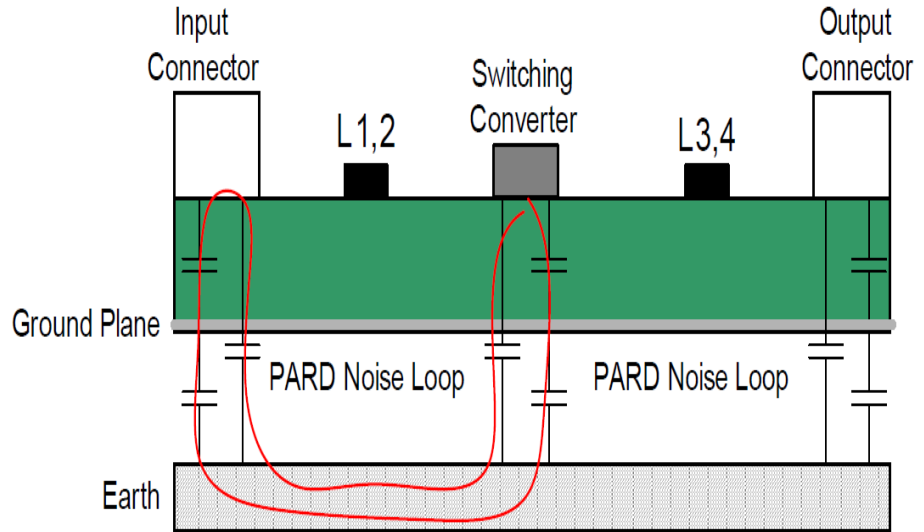
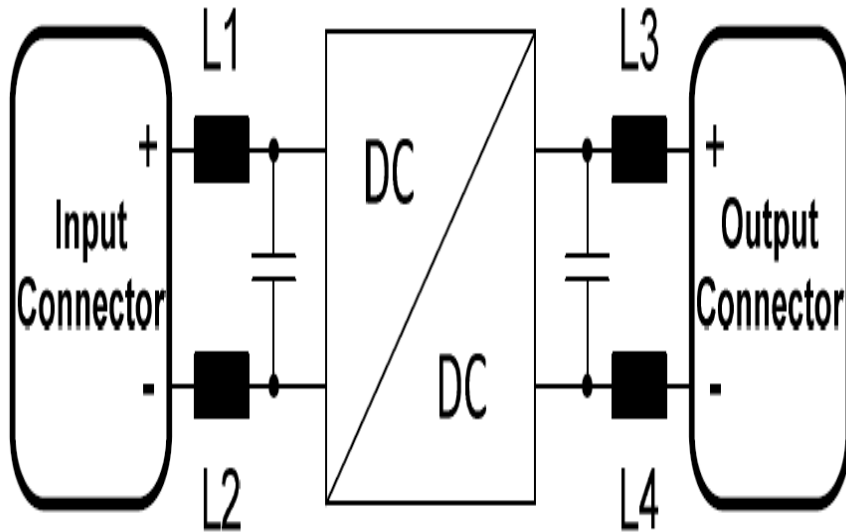


BPH Application As Input Choke Example

Customer's Application



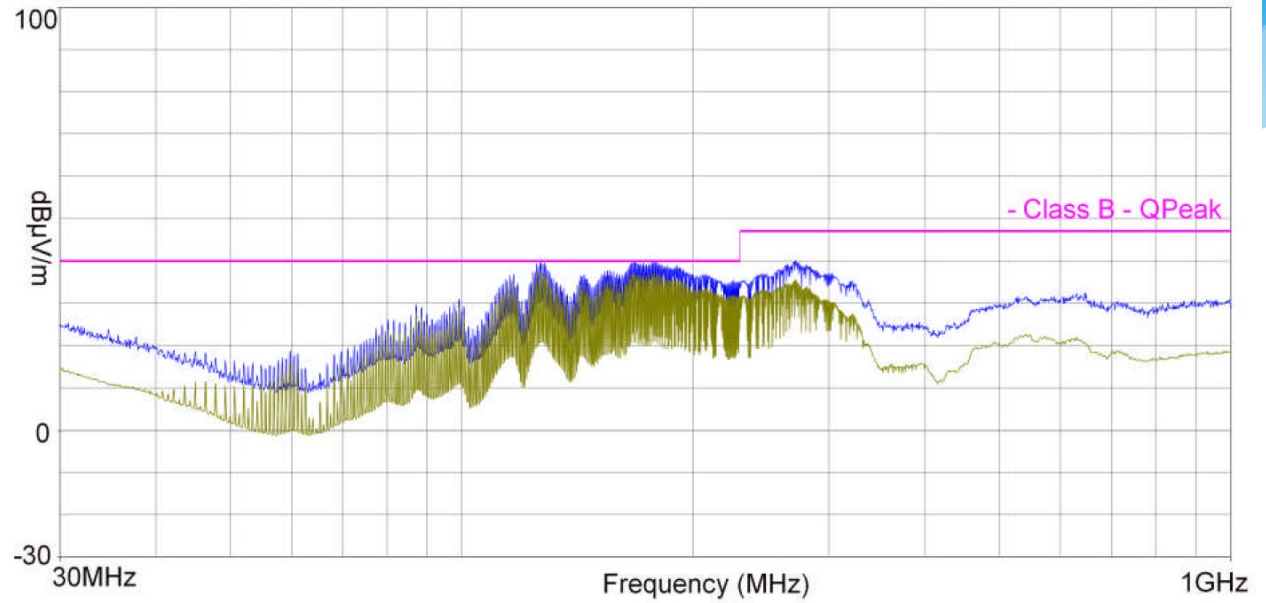
BPH Application As Input/Output Filter



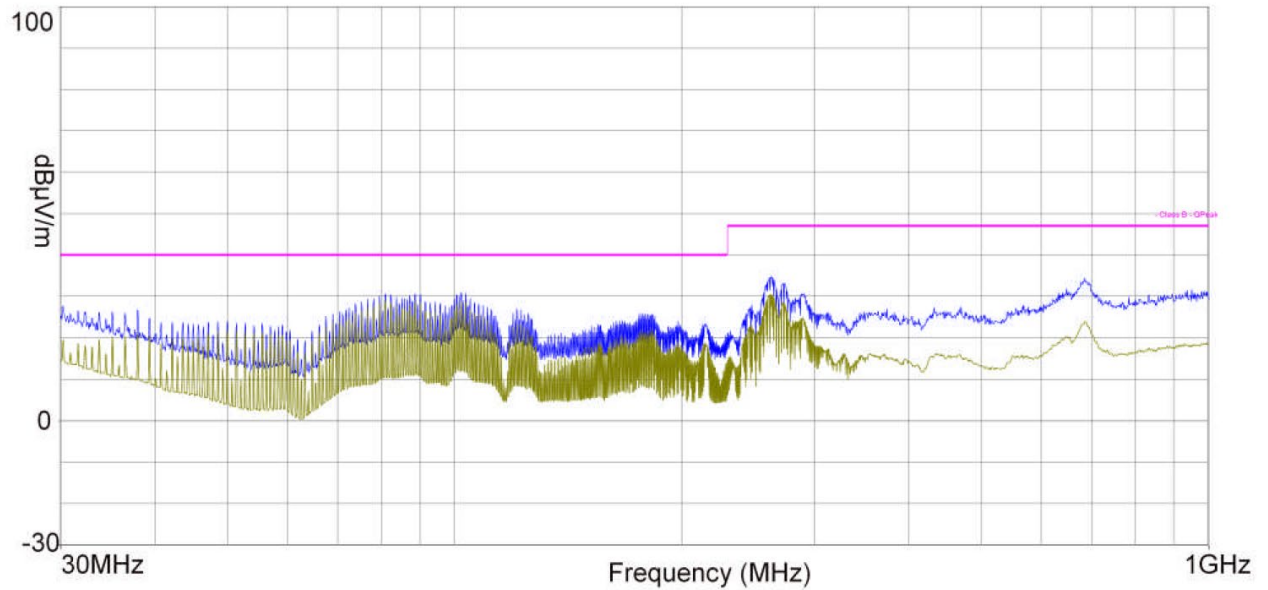
Again, in general ferrites should be placed as close as possible to the source of the noise because the noise couples into the unfiltered traces and cables. However, be aware that it is very likely that high frequency noise can couple around a ferrite via parasitic capacitance to GND and earth planes. Most EMC standards begin limiting radiated EMI at 30 MHz, so preventing this unwanted antenna effect of input and output leads is highly important. When a ground plane or a shielded enclosure is present, noise can couple around a ferrite placed towards the interior of a PCB

Input/Output Filter EMI effect example

Without Filter

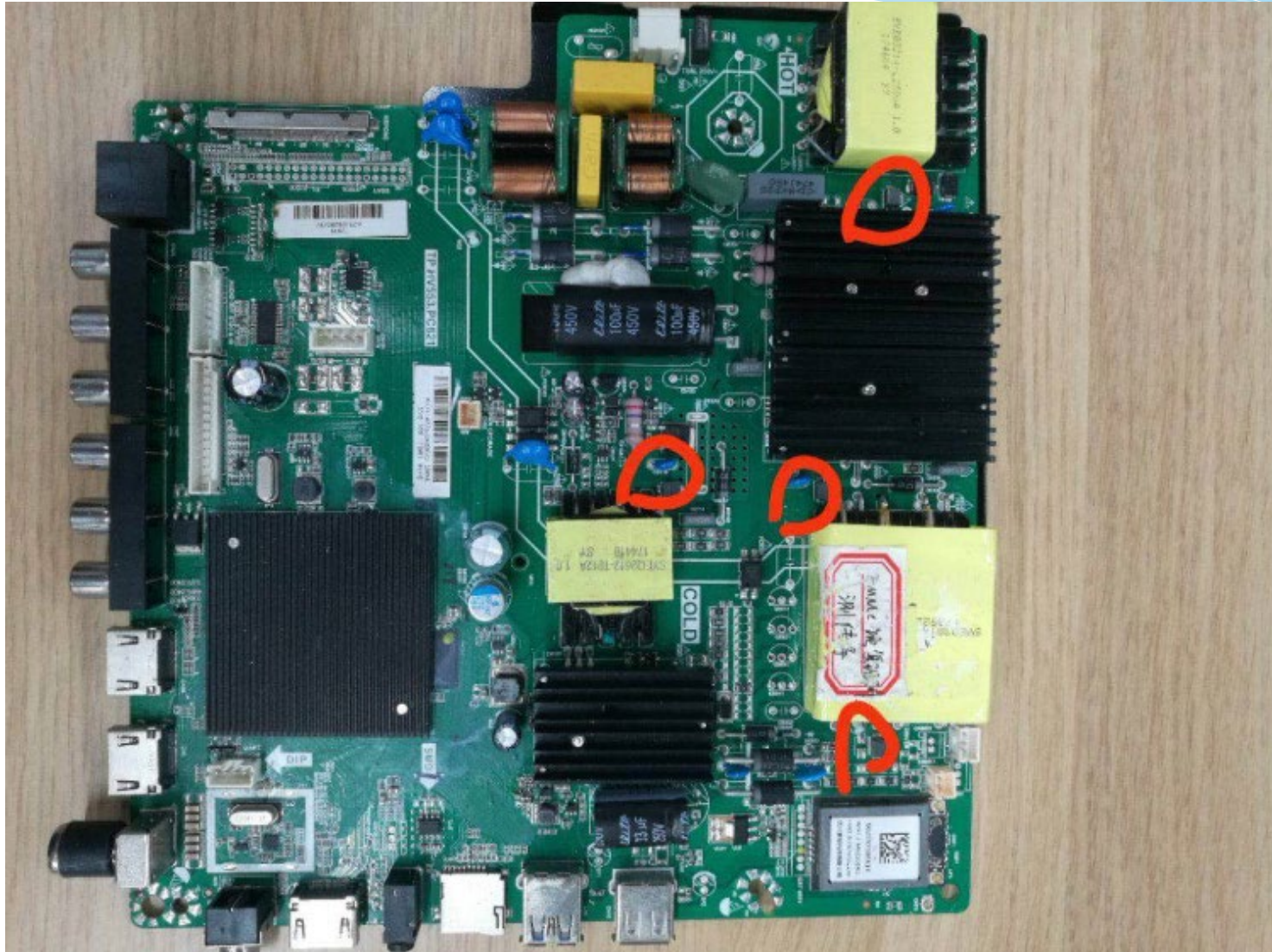


With Filter



BPH Application As Input/Output Filter Example

Customer's Application-TV Main Board



Contact

ELEKTRONIK **Blume**

Wilhelm Haßenpflug

BLUME ELEKTRONIK DISTRIBUTION GMBH

TECCENTER 1 | 31162 | BAD SALZDETFRUTH

FON:(0 50 63) 27 12-20 | FAX:(0 50 63) 27 12-12

EMAIL: HASSENPFUG@BLUME-ELEKTRONIK.DE

WWW.BLUME-ELEKTRONIK.DE

partnership in excellence