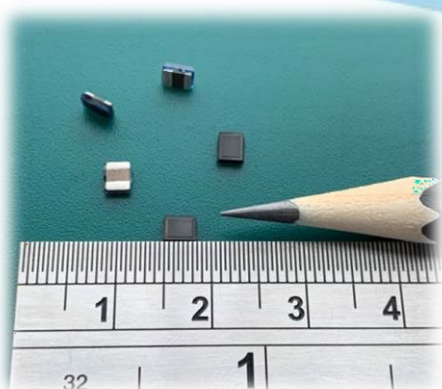


Molding Type High Current Power Inductors- 322512 SIZE TWPC322512 Series



Tablets



HDD, SSD



Wearable devices



Camcorder

Why choose TWPC322512 Series?

1. Featured with closed magnetic path and high-strength body structure.
2. Fully automated production with high product consistency.
3. Operating Range: -40~+125°C
4. Slim product design. (1.2mm Max)
5. Excellent RDC and Saturation current.
6. 100% Lead(Pb) & Halogen-Free and RoHS compliant.

Best solution for Space-limited devices.

Product Size

| Series | A(mm) | B(mm) | C(mm) | D(mm) | E(mm) |
|------------|---------|---------|--------|----------|----------|
| TWPC322512 | 3.2±0.3 | 2.5±0.3 | 1.2Max | 0.5±0.3. | 2.2±0.3. |

Product Specifications

| Inductance (uH) | Tolerance (%) | DCR (Ω) typ. | DCR (Ω) Max. | I sat (A) | I rms (A) |
|-----------------|---------------|--------------|--------------|-----------|-----------|
| 0.47~10.0 | ±20 | 0.019~0.29 | 0.022~0.324 | 6.80~1.7 | 5.50~1.1 |

Contact

ELEKTRONIK **Blume**

Wilhelm Haßenpflug

BLUME ELEKTRONIK DISTRIBUTION GMBH

TECCENTER 1 | 31162 | BAD SALZDETFURTH

FON:(0 50 63) 27 12-20 | FAX:(0 50 63) 27 12-12

EMAIL: HASSENPFLUG@BLUME-ELEKTRONIK.DE

WWW.BLUME-ELEKTRONIK.DE

partnership in excellence