

# Ferrite Bead

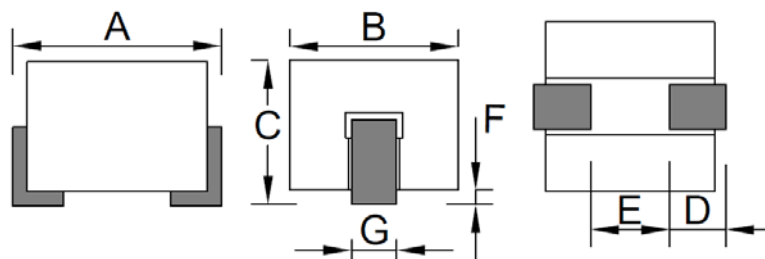
BPH323023W5V-400T

## 1. Features

1. 100% Lead(Pb) & Halogen-Free and RoHS compliant.
2. High reliability - Reliability tests comply with AEC-Q200
3. Operating temperature-40~+125°C (Including self - temperature rise)



## 2. Dimension



PRODUCT SIZE						
A(mm)	B(mm)	C(mm)	D(mm)	E(mm)	F(mm)	G(mm)
3.08 +0.10/-0.15	2.9 ±0.10	2.20 ±0.10	0.8 ±0.20	1.2 Min.	0.00~0.11	0.85 ±0.10

## 3. Part Numbering

BPH
323023
W5
V
-
400
T

A: Series  
 B: Dimension  
 C: Material  
 D: Category Code  
 E: Impedance  
 F: Packaging

Ferrite Core  
 V=Vehicle  
 400=40Ω  
 T=Taping and Reel

## 4. Specification

TAI-TECH Part Number	ELECTRICAL REQUIREMENTS 1			ELECTRICAL REQUIREMENTS 2			DCR (mΩ) Max.	Rated Current(A)	
	Impedance (Ω)	Tolerance (%)	Test Frequency (MHz)	Impedance (Ω)	Tolerance (%)	Test Frequency (MHz)		ΔT=40°C TYP.	ΔT=60°C TYP.
BPH323023W5V-400T	23	±25	25	40	±25	100	0.60	21.0(1) 15.0(2)	26.0(1) 18.0(2)

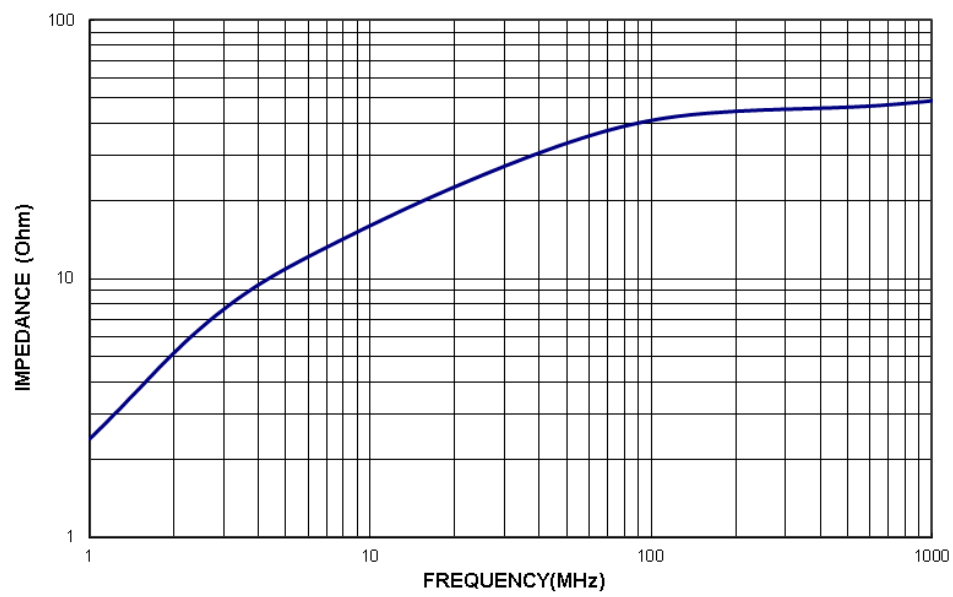
Note:

Rated Current :

(1) : Chroma high current test fixture.

(2) :PCB test fixture ( 30x45mm copper pattern , 50um copper thickness).

### Typical Impedance v.s. Frequency Curve



# Ferrite Bead

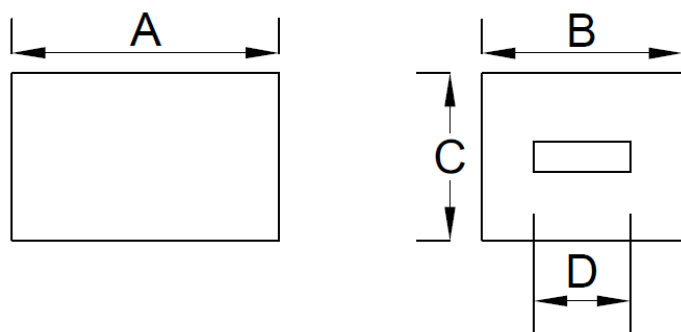
BPH853025R5V-101T

## 1. Features

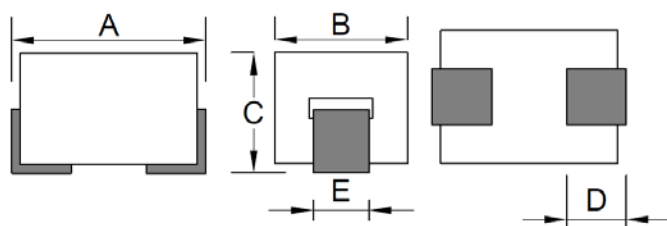
- 100% Lead(Pb) & Halogen-Free and RoHS compliant.
- High reliability -Reliability tests comply with AEC-Q200
- Operating temperature -40~+125°C (Including self - temperature rise)



## 2. Dimension



CORE SIZE			
A(mm)	B(mm)	C(mm)	D(mm)
8.5 ±0.25	3.0 ±0.15	2.5 ±0.15	1.5 ±0.15



PRODUCT SIZE				
A(mm)	B(mm)	C(mm)	D(mm)	E(mm)
9.0 ±0.40	3.0 ±0.15	2.8 ±0.25	1.50±0.50	1.25±0.20

## 3. Part Numbering

BPH
853025
R5
V
-
101
T

A: Series

B: Dimension

C: Material

Ferrite Core

D: Category Code

V=Vehicle

E: Impedance

101=100Ω

F: Packaging

T=Taping and Reel

## 4. Specification

TAI-TECH Part Number	ELECTRICAL REQUIREMENTS 1			ELECTRICAL REQUIREMENTS 2			DCR (mΩ) Max.	Rated Current(A)	
	Impedance (Ω)	Tolerance (%)	Test Frequency (MHz)	Impedance (Ω)	Tolerance (%)	Test Frequency (MHz)		ΔT=40°C TYP.	ΔT=60°C TYP.
BPH853025R5V-101T	65	±25	25	100	±25	100	1.00	30(1) 13(2)	40(1) 18(2)

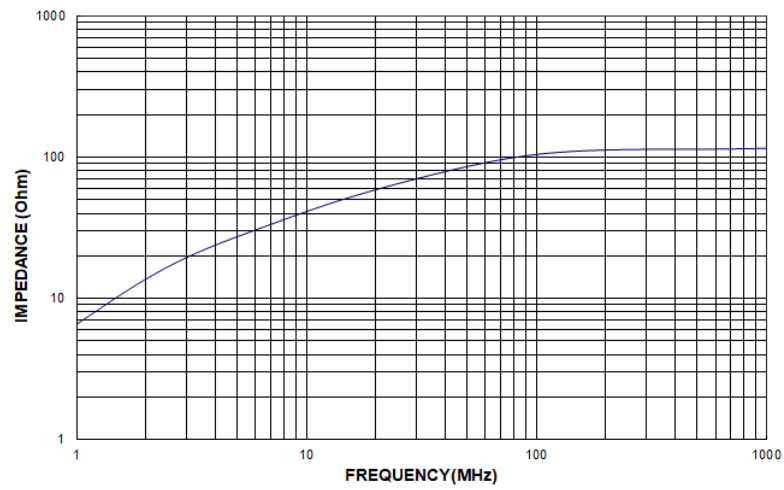
Note:

Rated Current :

(1) : Chroma high current test fixture.

(2) :PCB test fixture ( 30x45mm copper pattern , 50um copper thickness).

### Typical Impedance v.s. Frequency Curve



# Ferrite Bead

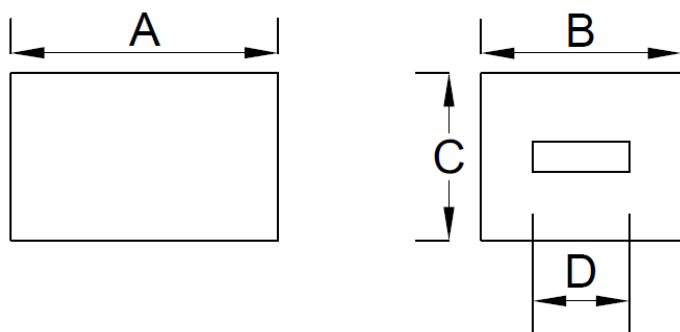
BPH403025R5V-530T

## 1. Features

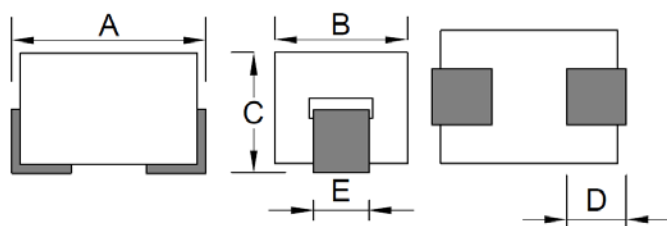
- 100% Lead(Pb) & Halogen-Free and RoHS compliant.
- High reliability -Reliability tests comply with AEC-Q200
- Operating temperature-40~+125°C (Including self - temperature rise)



## 2. Dimension



CORE SIZE			
A(mm)	B(mm)	C(mm)	D(mm)
4.00 ±0.25	3.10 ±0.15	2.50 ±0.15	1.50 ±0.15



PRODUCT SIZE				
A(mm)	B(mm)	C(mm)	D(mm)	E(mm)
4.30~5.10	3.1 ±0.15	2.70~3.1	1.35±0.20	1.35±0.15

## 3. Part Numbering

BPH	403025	R5	V	-	530	T
A	B	C	D		E	F

- A: Series  
 B: Dimension  
 C: Material  
 D: Category Code  
 E: Impedance  
 F: Packaging
- Ferrite Core  
 V=Vehicle  
 530=53Ω  
 T=Taping and Reel

## 4. Specification

TAI-TECH Part Number	ELECTRICAL REQUIREMENTS 1			ELECTRICAL REQUIREMENTS 2			DCR (mΩ) Max.	Rated Current(A)	
	Impedance (Ω)	Tolerance (%)	Test Frequency (MHz)	Impedance (Ω)	Tolerance (%)	Test Frequency (MHz)		△T=40°C TYP.	△T=60°C TYP.
BPH403025R5V-530T	35	±25	25	53	±25	100	0.60	35.0(1) 15.0(2)	45.0(1) 18.0(2)

Note:

Rated Current :

(1) : Chroma high current test fixture.

(2) :PCB test fixture ( 30x45mm copper pattern , 50um copper thickness).

### Typical Impedance v.s. Frequency Curve

